

- Curb and Gutter
- Valley Gutter and Apron
- Asphalt
- Sidewalk
- Valley Gutter Linear Footage

CONSTRUCTION NOTES:

1. 24-FOOT HIGH CHAIN LINK FENCE WITH PLASTIC FOOTAGE RD (SEE DETAIL ON SHEET C-2). INSTALL RDS AROUND BACKSTOP AND STOP AT DUGOUT. INSTALL 10" WIDE BY 8" DEEP CONCRETE CURB BENEATH FENCE. TOP OF CURB TO BE 1" ABOVE FINISHED GRADE.
2. INSTALL 6-FOOT HIGH CHAIN LINK FENCE WITH PRIVACY SLATS AND A 6" WIDE BY 8" DEEP CONCRETE CURB BENEATH FENCE. TOP OF CURB TO BE 2" ABOVE FINISHED GRADE, EXCEPT AT CONCRETE SPLASHPAD WHERE TOP OF CURB ELEVATION IS EQUAL TO THE FINISH GRADE ELEVATION.
3. INSTALL BUILDING DUGOUT (SEE ARCHITECTURAL DRAWINGS FOR DETAILS).
4. INSTALL HOME PLATE, SCHUTT HOLLYWOOD BURY ALL HOME PLATE (#12807100) OR ENGINEER APPROVED EQUAL (SEE DETAIL ON SHEET C-2).

5. INSTALL BASE, SCHUTT I HOLLYWOOD BASE W/ANI W/COLORED INDICATORS (SEE DETAIL ON SHEET C-2).
6. INSTALL PITCHING MOUND RUBBER, SCHUTT 4-SIDED PROFESSIONAL PITCHING RUBBER (#12808500 OR ENGINEER APPROVED EQUAL (SEE DETAIL ON SHEET C-2)).
7. CONSTRUCT PITCHERS MOUND (SEE DETAIL ON SHEET C-2).
8. INSTALL 4" THICK INFIELD MIX. (SEE LANDSCAPE DRAWINGS).
9. INSTALL 8-FOOT HIGH BY 4-FOOT WIDE CHAIN LINK GATE. INSTALL 6" MIX BY 8" DEEP CONCRETE CURB BENEATH GATE.
10. INSTALL 8-FOOT HIGH CHAIN LINK FENCE WITH PRIVACY SLATS AND A 6" WIDE BY 8" DEEP CONCRETE CURB BENEATH FENCE. TOP OF CURB TO BE 1" ABOVE FINISHED GRADE, EXCEPT AT THE END NEAR THE OUTFIELD FENCE WHERE IT TRANSITIONS IN 28- FEET TO BE 2" ABOVE FINISH GRADE.

On-Site AW Scope of Work

12. INSTALL 8-FOOT HIGH BY 8-FOOT WIDE CHAIN LINK DOUBLE SWING GATE. INSTALL 6" WIDE BY 8" DEEP CONCRETE CURB BENEATH GATE.
13. INSTALL 8-FOOT HIGH BY 12-FOOT WIDE CHAIN LINK DOUBLE SWING GATE. INSTALL 6" WIDE BY 8" DEEP CONCRETE CURB BENEATH GATE.
14. CONSTRUCT FENCE BLACKOUT (SEE DETAIL ON SHEET C-1).
15. INSTALL FOUL POLE (SEE DETAIL ON SHEET C-2).

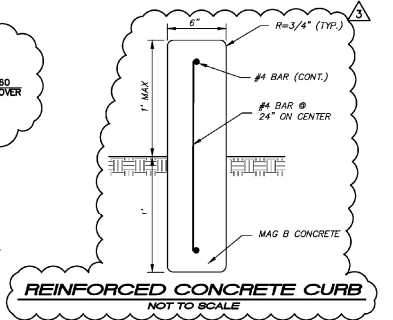
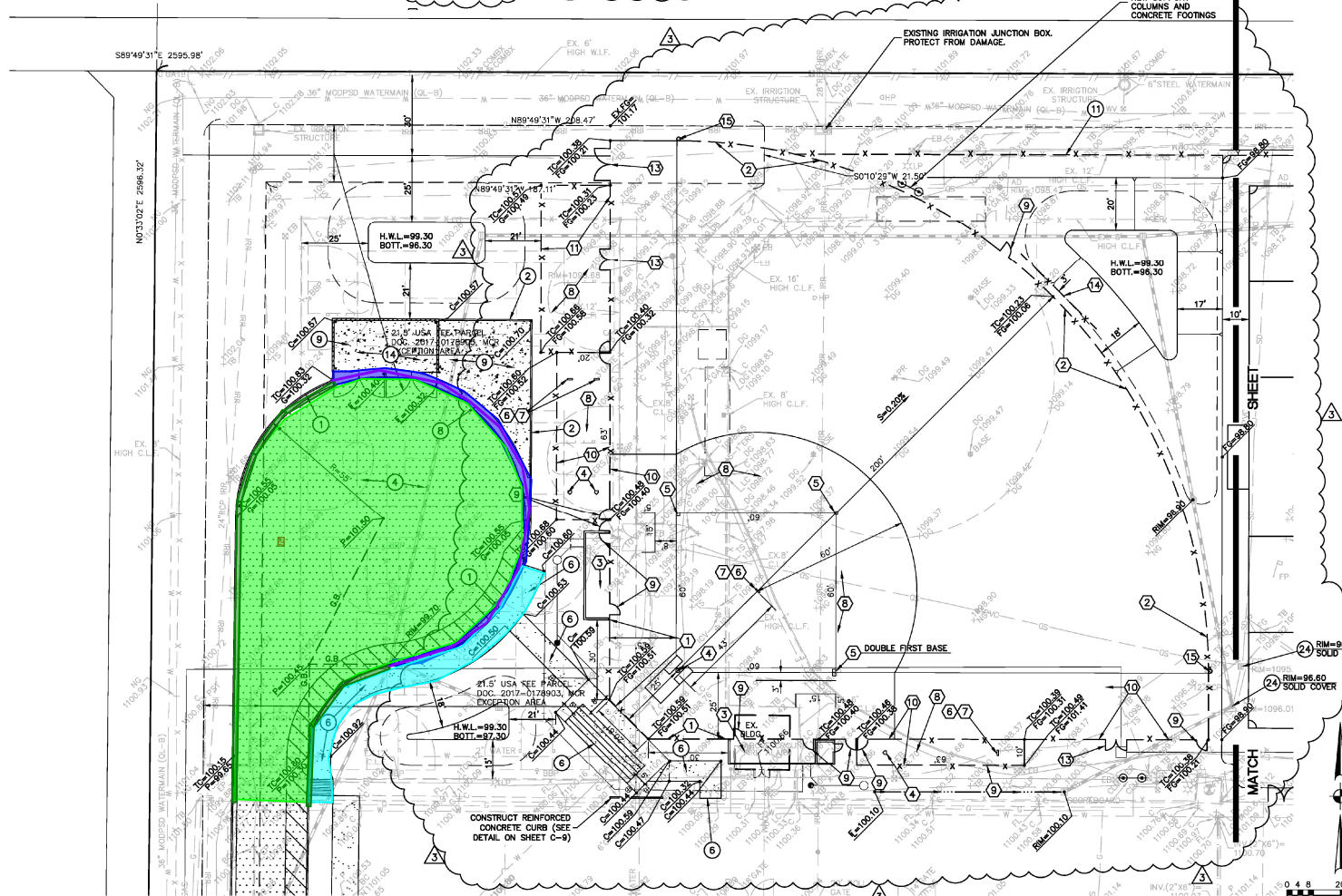
L ON SHEET C-1, 4G CAGE #9 100'L X BLACK POLYESTER.

NOTE:

SEE LANDSCAPE PLANS FOR ADDITIONAL CONCRETE SIDEWALK.

GRADING AND DRAINAGE CONSTRUCTION NOTES:

1. CONSTRUCT CONCRETE VERTICAL CURB AND GUTTER (MAG STANDARD DETAIL NO. 220-1, TYPE A).
2. CONSTRUCT CONCRETE SINGLE CURB (MAG STANDARD DETAIL NO. 222, TYPE 'A').
3. STRAIGHT GRADE FROM 6" BELOW TOP OF CURB TO FINISH GRADE SHOWN AT A 5:1 MAXIMUM SLOPE.
4. INSTALL ASPHALTIC CONCRETE PAVEMENT (3" A.C. (1/2" MIX) OVER 8" A.B.C. OVER COMPACTED SUBGRADE).
5. INSTALL ASPHALTIC CONCRETE PAVEMENT (2" A.C. (1/2" MIX) OVER 6" A.B.C. OVER COMPACTED SUBGRADE).
6. CONSTRUCT CONCRETE SIDEWALK (CITY OF PHOENIX STANDARD DETAIL NO. P1230). SEE LANDSCAPE DRAWINGS FOR SCORING AND FINISH.
7. INSTALL THICKENED PAVEMENT EDGE (MAG STANDARD DETAIL NO. 201, TYPE B).
8. CONSTRUCT CONCRETE VALLEY GUTTER AND APRON (MAG STANDARD DETAIL NO. 240). WIDTH PER PLAN.
9. CONSTRUCT SEVEN INCH (7") THICK 4,000 P.S.I. (AT 28 DAYS) CONCRETE PAVING OR CONCRETE FIRE LANE.
10. PROTECT EXISTING RIP-RAP FROM DAMAGE
11. INSTALL 4' HIGH CHAIN LINK FENCE.
12. STRAIGHT GRADE FROM 1" BELOW TOP OF CONCRETE CURB OR SIDEWALK TO AREA DRAIN OR CATCH BASIN RIM ELEVATION OR FLOWLINE ELEVATION
13. CONSTRUCT CONCRETE SPLASHPAD (SEE DETAIL SHEET C-3).
14. INSTALL TRASH ENCLOSURE (SEE ARCHITECTURAL DRAWINGS FOR DETAILS).
15. PAINT STRIPE PARKING LOT TO THE ALIGNMENTS INDICATED, INCLUDING THE PAINTING OF ALL HANDICAP SYMBOLS AND WALKWAYS, DIRECTIONAL ARROWS, PARKING STALLS, DROP-OFF AREAS, ETC. (TYPICAL).
16. INSTALL FIRE LANE SIGN PER CITY OF PHOENIX AND STATE FIRE MARSHAL'S REQUIREMENTS. POST AND BASE PER MAG STANDARD DETAIL NO. 131, TYPE 'B'.
17. INSTALL 4-FOOT HIGH BY 12-FOOT WIDE DOUBLE SWING GATE WITH 180° HINGES.
18. MATCH EXISTING GRADE.
19. INSTALL 4-FOOT HIGH BY 4-FOOT WIDE SWING GATE WITH 180° HINGES.
20. PROTECT EXISTING ELECTRICAL AND COMMUNICATION LINES FROM DAMAGE.
21. INSTALL CURB TERMINATION (MAG STANDARD DETAIL NO. 222).
22. SEE LANDSCAPE DRAWINGS FOR METAL FENCING AND GATE DETAILS.
23. CONCRETE STEP, SEE LANDSCAPING HARDSCAPE PLANS FOR DETAILS.
24. ADJUST DRYWELL TO FINISH GRADE.



From ADD 3 Site Package 250424 - Phase 1

SCALE: 1" = 20'

REVISED 04-24-25

DLR GROUP

EXPIRES 9-30-25
2025.04.24.13:47:44-0707

Bowman

1900 N. Desert Drive, Suite 210
Tempe, Arizona 85288
Phone: (480) 968-0800

METRO TECH - PH1
PHOENIX UNION HIGH SCHOOL DISTRICT

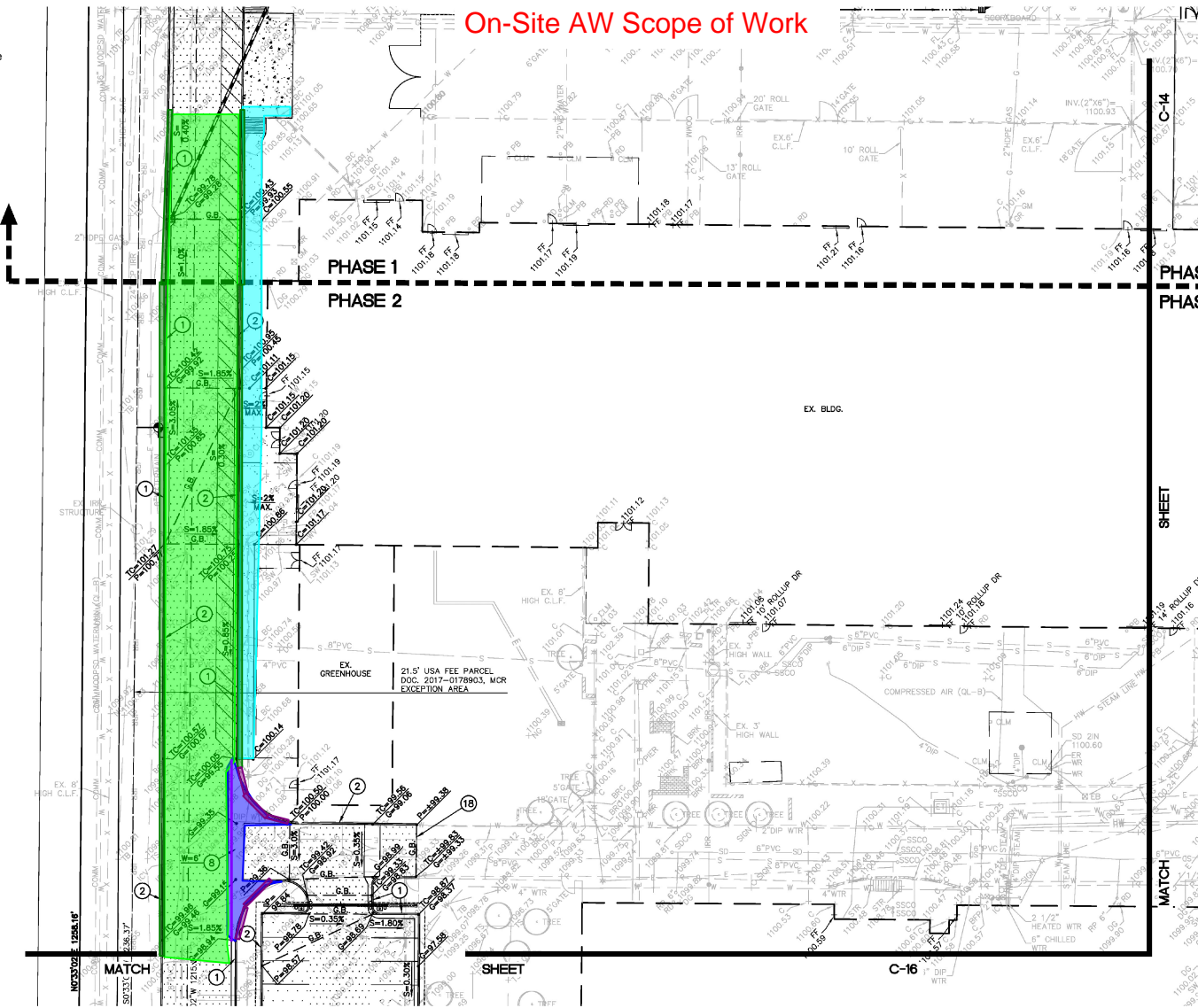
CD SET
03-27-25
Revised: 04-24-25
ADDENDUM NO. 1

450336

9 OF 18
C-9

- Curb and Gutter
- Valley Gutter and Apron
- Vertical Curb
- Asphalt
- Sidewalk
- Valley Gutter Lineal Footage

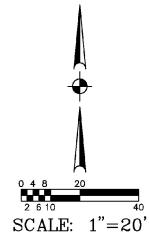
On-Site AW Scope of Work



GRADING AND DRAINAGE CONSTRUCTION NOTES:

- ① CONSTRUCT CONCRETE VERTICAL CURB AND GUTTER (MAG STANDARD DETAIL NO. 220-1, TYPE A).
- ② CONSTRUCT CONCRETE SINGLE CURB (MAG STANDARD DETAIL NO. 222, TYPE 'A').
- ③ INSTALL CONCRETE SIDEWALK RAMP, TYPE PER PLAN (SEE DETAIL ON SHEET C-3).
- ④ INSTALL ASPHALTIC CONCRETE PAVEMENT (3" A.C. (1/2" MIX) OVER 8" A.B.C. OVER COMPACTED SUBGRADE).
- ⑤ INSTALL ASPHALTIC CONCRETE PAVEMENT (2" A.C. (1/2" MIX) OVER 6" A.B.C. OVER COMPACTED SUBGRADE).
- ⑥ CONSTRUCT CONCRETE SIDEWALK (CITY OF PHOENIX STANDARD DETAIL NO. P1230). SEE LANDSCAPE DRAWINGS FOR SCORING AND FINISH.
- ⑦ INSTALL THICKENED PAVEMENT EDGE (MAG STANDARD DETAIL 201, TYPE B).
- ⑧ CONSTRUCT CONCRETE VALLEY GUTTER AND APRON (MAG STANDARD DETAIL NO. 240). WIDTH TO BE 3'.
- ⑨ CONSTRUCT SEVEN INCH (7") THICK 4,000 P.S.I. (AT 28 DAYS) CONCRETE PAVING OR CONCRETE FIRE LANE.
- ⑩ INSTALL DRAIN THROUGH LANDSCAPE AREA. (SEE DETAIL ON SHEET C-3).
- ⑪ INSTALL CONCRETE DRIVEWAY ENTRANCE (MAG STANDARD DETAIL 250-1).
- ⑫ STRAIGHT GRADE FROM 1" BELOW TOP OF CONCRETE SIDEWALK OR CURB AT A 5:1 MAXIMUM SLOPE TO MATCH EXISTING GRADE.
- ⑬ CONSTRUCT CONCRETE SPLASHPAD (SEE DETAIL SHEET C-3).
- ⑭ INSTALL TRASH ENCLOSURE (SEE ARCHITECTURAL DRAWINGS FOR DETAILS).
- ⑮ PAINT STRIPE PARKING LOT TO THE ALIGNMENTS INDICATED, INCLUDING THE PAINTING OF ALL HANDICAP SYMBOLS AND WALKWAYS, DIRECTIONAL ARROWS, PARKING STALLS, DROP-OFF AREAS, ETC. (TYPICAL).
- ⑯ INSTALL FIRE LANE SIGN PER CITY OF PHOENIX AND STATE FIRE MARSHAL'S REQUIREMENTS. POST AND BASE PER MAG STANDARD DETAIL NO. 131, TYPE 'B'.
- ⑰ INSTALL 12" SIDEWALK SCUPPER (MAG STANDARD DETAIL NO. 206).
- ⑱ MATCH EXISTING GRADE.
- ⑲ SEE LANDSCAPE PLANS FOR FENCING AND GATES.
- ⑳ INSTALL CONCRETE LANDSCAPE CURB (SEE LANDSCAPE PLANS FOR DETAILS).
- ㉑ INSTALL HANDICAP PARKING SIGN PER CITY OF PHOENIX AND ADA REQUIREMENTS. POST AND BASE PER MAG STANDARD DETAIL NO. 131, TYPE 'B'. (TOP OF SIGN SHALL BE 6" ABOVE GRADE). TYPICAL AT EACH HANDICAP SPACE.
- ㉒ INSTALL PRECAST SAFETY CURB (MAG STANDARD DETAIL NO. 150, TYPE B-3).
- ㉓ INSTALL CURB TERMINATION (MAG STANDARD DETAIL NO. 222).
- ㉔ INSTALL "DO NOT ENTER" SIGN (M.U.T.C.D. R5-1, 36" X 36", WITH POST AND BASE PER MAG STANDARD DETAIL NO. 131, TYPE 'B' (TOP OF SIGN SHALL BE 6" ABOVE GRADE)).

From Site Set 25.05.30









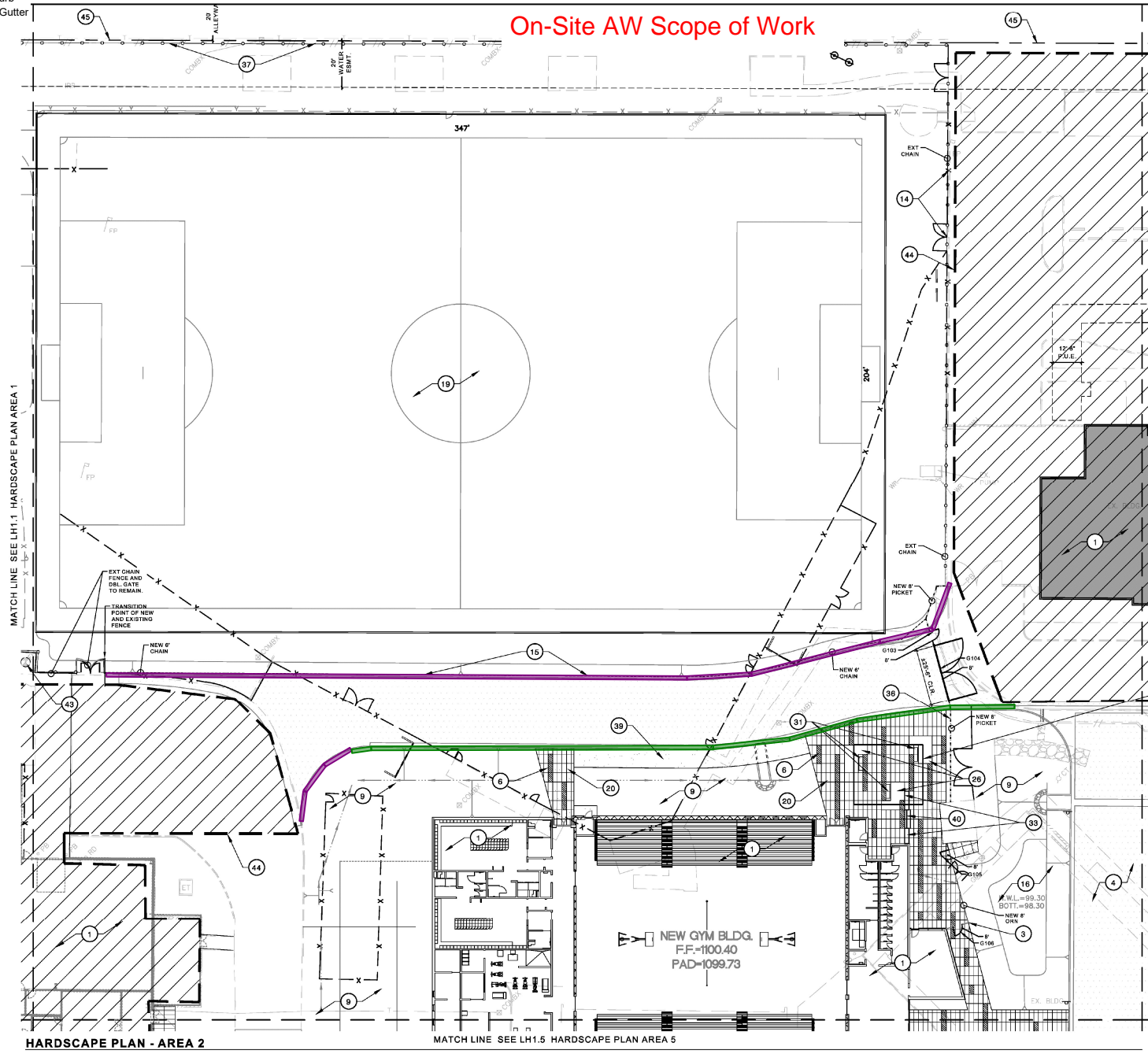
Metro Tech - PH2
PHOENIX UNION HIGH SCHOOL DISTRICT

BIDDING SET
05-20-25
Revisions

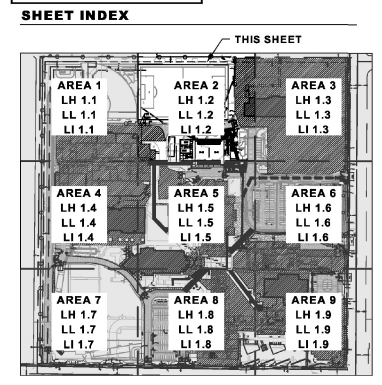
4503368

13 of 27
C-13

On-Site AW Scope of Work



- ### HARDSCAPE LEGEND
- NOTE: REFER TO GATE SCHEDULE AND NOTES ON SHEET LH.0 FOR ADDITIONAL INFORMATION. PROPOSED FENCE AND GATE HEIGHTS ARE NOTED IN HARDSCAPE PLANS. VERIFY EACH LOCATION AND RECORD IN SHOP DRAWING SUBMITTAL.
- (1) BUILDING FOOTPRINT. SEE ARCHITECTURE PLANS.
 - (2) BASEBALL FIELD. SEE CIVIL PLANS FOR LAYOUT, BACKSTOP AND FENCING.
 - (3) ORNAMENTAL FENCING. SEE DETAILS 4, 6 & 7. SHEET LH.2.2 AND DETAIL 1. SHEET LH.2.3 (B/M/LAR).
 - (4) PARKING LOT / DRIVEWAY. SEE CIVIL SHEETS.
 - (5) ACCESSIBLE PARKING. SEE CIVIL SHEETS.
 - (6) NEW - SANDBLASTED ANGLED "KEY" WALK. SEE DETAIL 2. SHEET LH.2.2.
 - (7) REMOVED - SANDBLASTED "KEY" WALK. TO BE REMOVED WITH THE EXISTING CONCRETE BANDING. SEE DETAIL 3. SHEET LH.2.2.
 - (8) LINEAR "KEY" CAST CONCRETE WALK.
 - (9) PRESERVE EXISTING LANDSCAPE AREA. PROTECT FROM DAMAGE. PROVIDE PROVISION DURING CONSTRUCTION PHASE.
 - (10) SANDPY STRUCTURE.
 - (11) PROPOSED METAL PICKET FENCING. SEE DETAIL 2 & 3. SHEET LH.2.2.
 - (12) BUILDING FOOTPRINT. SEE ARCHITECTURE PLANS.
 - (13) EXISTING METAL PICKET FENCING. PROTECT IN PLACE. REFER TO FENCE LEGEND.
 - (14) DROP-OFF AREA.
 - (15) EXISTING CHAIN LINK FENCING. PROTECT IN PLACE.
 - (16) PROPOSED CHAIN LINK FENCING AND GATE. SEE DETAIL 1, 2, 3 & 4. SHEET LH.2.1.
 - (17) RETENTION AREA. SEE CIVIL SHEETS.
 - (18) SOFTBALL FIELD. SEE CIVIL PLANS FOR LAYOUT, BACKSTOP AND FENCING.
 - (19) EXISTING WALK. PROTECT IN PLACE.
 - (20) SOCCER FIELD.
 - (21) GATHERING SPACE WITH SEAT WALLS. SEE DETAIL 6. SHEET LH.2.2.
 - (22) EXISTING DRIVE WAY.
 - (23) CIRCULAR DRIVE WAY. SEE CIVIL SHEETS.
 - (24) LOT LANDSCAPE ISLAND. SEE CIVIL SHEETS.
 - (25) EXISTING RETAINING WALL. PROTECT IN PLACE.
 - (26) NEW SCREEN WALL WITH CHAMFERED METAL SCREENS. SEE DETAIL 4, 5, & 6. SHEET LH.2.2.
 - (27) PROPOSED LANDSCAPE AREA.
 - (28) EXISTING HARDSCAPE AREA. PROTECT IN PLACE.
 - (29) PROPOSED DRIVE WAY. SEE CIVIL ENGINEERING PLANS.
 - (30) STANDARD GRAY CONCRETE WALK. PER STANDARD MAG DETAIL #200.
 - (31) GATES AND ORNAMENTAL PANEL FENCE AT CAMPUS ENTRY. SEE DETAIL 1. SHEET LH.2.3 AND DETAIL 5. LH.2.2.
 - (32) PREFABRICATED #8 RATIO BENCH BY FORMS + SURFACES. SEE DETAIL 8. SHEET LH.2.1.
 - (33) CAST CONCRETE TURF HEADER. SEE DETAIL 6, LH.2.
 - (34) CAST CONCRETE BENCHES WITH CHAMFER EDGE. SEE DETAIL 1. LH.2.
 - (35) TIER BLEACHER. SEE DETAIL 3, LH.2.3.
 - (36) FUTURE BASEBALL FIELD HOUSE.
 - (37) PROPOSED TURF FIELD FENCING AND VEHICLE FIRE LANE GATE. SEE DETAILS 2, 3, & 4. SHEET LH.2.3.
 - (38) EXISTING WROUGHT IRON FENCING. PROTECT IN PLACE.
 - (39) ARTIFICIAL TURF AREA. SEE LANDSCAPE SHEETS.
 - (40) PROPOSED SIDEWALK. SEE CIVIL SHEETS.
 - (41) ONE-STEP CONCRETE STAIR WITH HANDRAIL. SEE DETAIL 2. LH.2.3.
 - (42) LARGE TRASH ENCLOSURE NEAR SOFTBALL. SEE DETAIL 4, 7, LH.2.7.
 - (43) 2 BIN TRASH ENCLOSURE NEAR GYM. SEE DETAIL 5, 6, 7, LH.2.7.
 - (44) FIRE HYDRANT LOCATION. MAINTAIN 3' CLEAR ACCESS AT ALL TIMES.
 - (45) APPROXIMATE LIMIT OF CONSTRUCTION SCOPE.
 - (46) PROPERTY LINE. SEE CIVIL FOR ADDITIONAL INFORMATION.
 - (47) RIGHT OF WAY LINE. SEE CIVIL FOR ADDITIONAL INFORMATION.
 - (48) RIGHT VISIBILITY TRIANGLE.
- ALTERNATES:
A - 100% REDUCTION IN BENCHES



SCALE: 1" = 20'-0"

NORTH

KIVA PROJECT #: 08-8833
 SDEV #: 980181
 P&P FACT#: 2408133
 MEETING DATE: 12/5/2024

DLR GROUP
 ©DLR Group

NOT FOR CONSTRUCTION
 EXPIRES 12/31/2027

LOGAN SIMPSON
 222 N WALKER AVENUE, SUITE 222
 TULSA, AZ 87001
 P: (918) 487-0341

1800 WEST THOMAS ROAD
 TULSA, OK, 74103
 918-487-0341

BIDDING SET
 05/30/2025

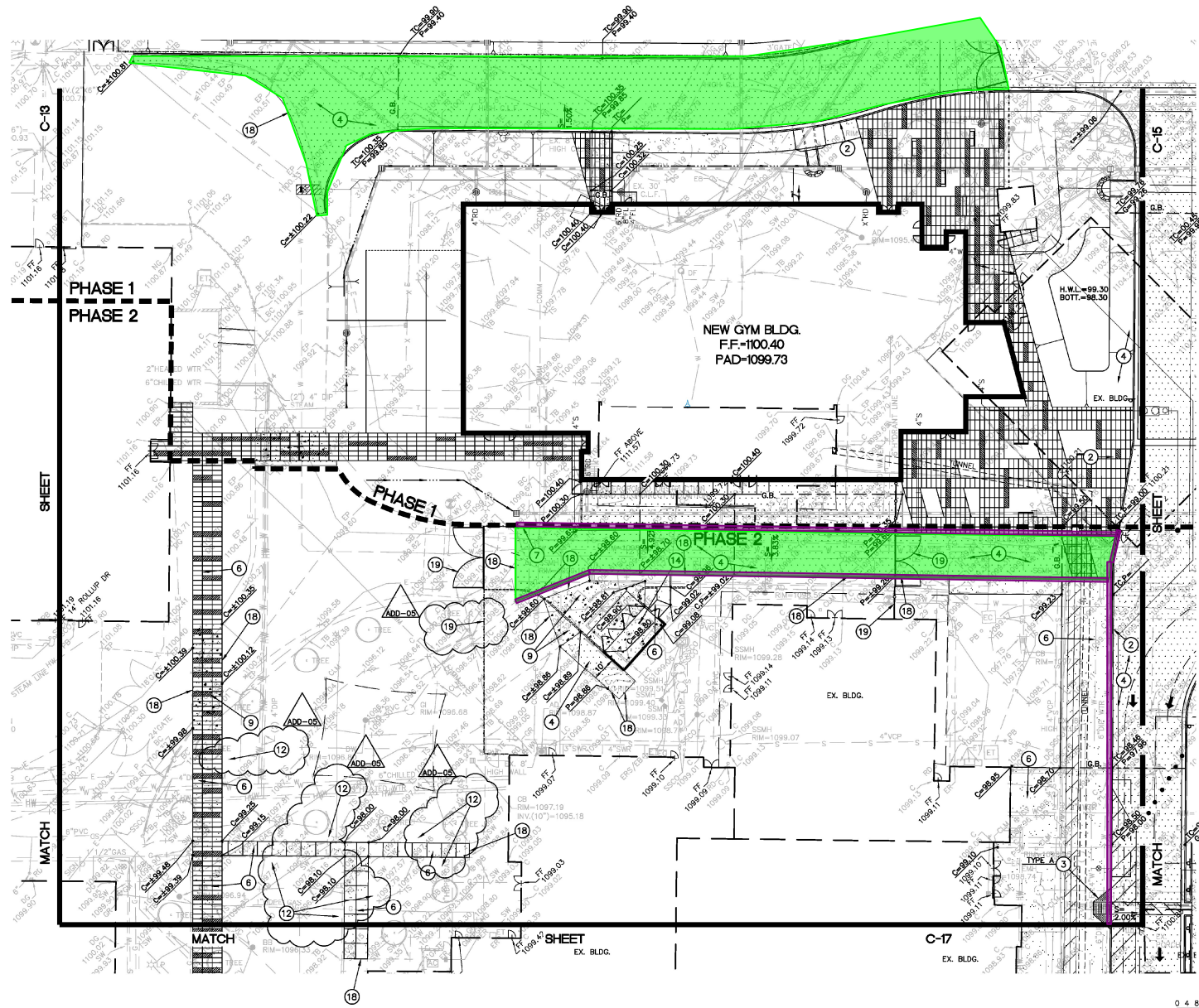
Revisions

HARDSCAPE PLAN
LH.1.2

46 OF 110

KIVA PROJECT #: 08-8833

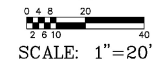
On-Site AW Scope of Work



GRADING AND DRAINAGE CONSTRUCTION NOTES:

- 1 CONSTRUCT CONCRETE VERTICAL CURB AND GUTTER (MAG STANDARD DETAIL NO. 220-1, TYPE A).
- 2 CONSTRUCT CONCRETE SINGLE CURB (MAG STANDARD DETAIL NO. 222, TYPE 'A').
- 3 INSTALL CONCRETE SIDEWALK RAMP, TYPE PER PLAN (SEE DETAIL ON SHEET C-3).
- 4 INSTALL ASPHALTIC CONCRETE PAVEMENT (3" A.C. (1/2" MIX) OVER 8" A.B.C. OVER COMPACTED SUBGRADE).
- 5 INSTALL ASPHALTIC CONCRETE PAVEMENT (2" A.C. (1/2" MIX) OVER 6" A.B.C. OVER COMPACTED SUBGRADE).
- 6 CONSTRUCT CONCRETE SIDEWALK (CITY OF PHOENIX STANDARD DETAIL NO. P1230). SEE LANDSCAPE DRAWINGS FOR SCORING AND FINISH.
- 7 INSTALL THICKENED PAVEMENT EDGE (MAG STANDARD DETAIL 201, TYPE B).
- 8 CONSTRUCT CONCRETE VALLEY GUTTER AND APRON (MAG STANDARD DETAIL NO. 240). WIDTH TO BE 3'.
- 9 CONSTRUCT SEVEN INCH (7") THICK 4,000 P.S.I. (AT 28 DAYS) CONCRETE PAVING OR CONCRETE FIRE LANE.
- 10 INSTALL DRAIN THROUGH LANDSCAPE AREA. (SEE DETAIL ON SHEET C-3).
- 11 INSTALL CONCRETE DRIVEWAY ENTRANCE (MAG STANDARD DETAIL 250-1).
- 12 STRAIGHT GRADE FROM 1" BELOW TOP OF CONCRETE SIDEWALK OR CURB AT A 5:1 MAXIMUM SLOPE TO MATCH EXISTING GRADE.
- 13 CONSTRUCT CONCRETE SPLASHPAD (SEE DETAIL SHEET C-3).
- 14 INSTALL TRASH ENCLOSURE (SEE ARCHITECTURAL DRAWINGS FOR DETAILS).
- 15 PAINT STRIPE PARKING LOT TO THE ALIGNMENTS INDICATED, INCLUDING THE PAINTING OF ALL HANDICAP SYMBOLS AND WALKWAYS, DIRECTIONAL ARROWS, PARKING STALLS, DROP-OFF AREAS, ETC. (TYPICAL).
- 16 INSTALL FIRE LANE SIGN PER CITY OF PHOENIX AND STATE FIRE MARSHAL'S REQUIREMENTS. POST AND BASE PER MAG STANDARD DETAIL NO. 131, TYPE 'B'.
- 17 TOP OF CURB TO BE FLUSH WITH CONCRETE OR PAVEMENT ELEVATION.
- 18 MATCH EXISTING GRADE.
- 19 SEE LANDSCAPE PLANS FOR FENCING AND GATES.
- 20 INSTALL CONCRETE LANDSCAPE CURB (SEE LANDSCAPE PLANS FOR DETAILS).
- 21 INSTALL HANDICAP PARKING SIGN PER CITY OF PHOENIX AND ADA REQUIREMENTS. POST AND BASE PER MAG STANDARD DETAIL NO. 131, TYPE 'B'. (TOP OF SIGN SHALL BE 6" ABOVE GRADE). TYPICAL AT EACH HANDICAP SPACE.
- 22 INSTALL PRECAST SAFETY CURB (MAG STANDARD DETAIL NO. 150, TYPE B-3).
- 23 INSTALL CURB TERMINATION (MAG STANDARD DETAIL NO. 222).
- 24 INSTALL "DO NOT ENTER" SIGN (M.U.T.C.D. R5-1, 36" X 36", WITH POST AND BASE PER MAG STANDARD DETAIL NO. 131, TYPE 'B' (TOP OF SIGN SHALL BE 6" ABOVE GRADE)).

From South Site Package ADD 05



HDLRGROUP

36664
ANDREW J. BOWMAN
MECHANICAL ENGINEERING
PHOENIX, ARIZONA
EXPIRES 6-30-25
2025.06.06 14:42:37-0707

Bowman

1900 N. Desert Blvd, Suite 210
Tempe, Arizona 85288
Phone: (480) 948-0500
www.bowman.com

METRO TECH - PH2

PHOENIX UNION HIGH SCHOOL DISTRICT
CONSTRUCTION DOCUMENTS

05-28-25
REVISED
ADD-05 06-09-2025

4503369

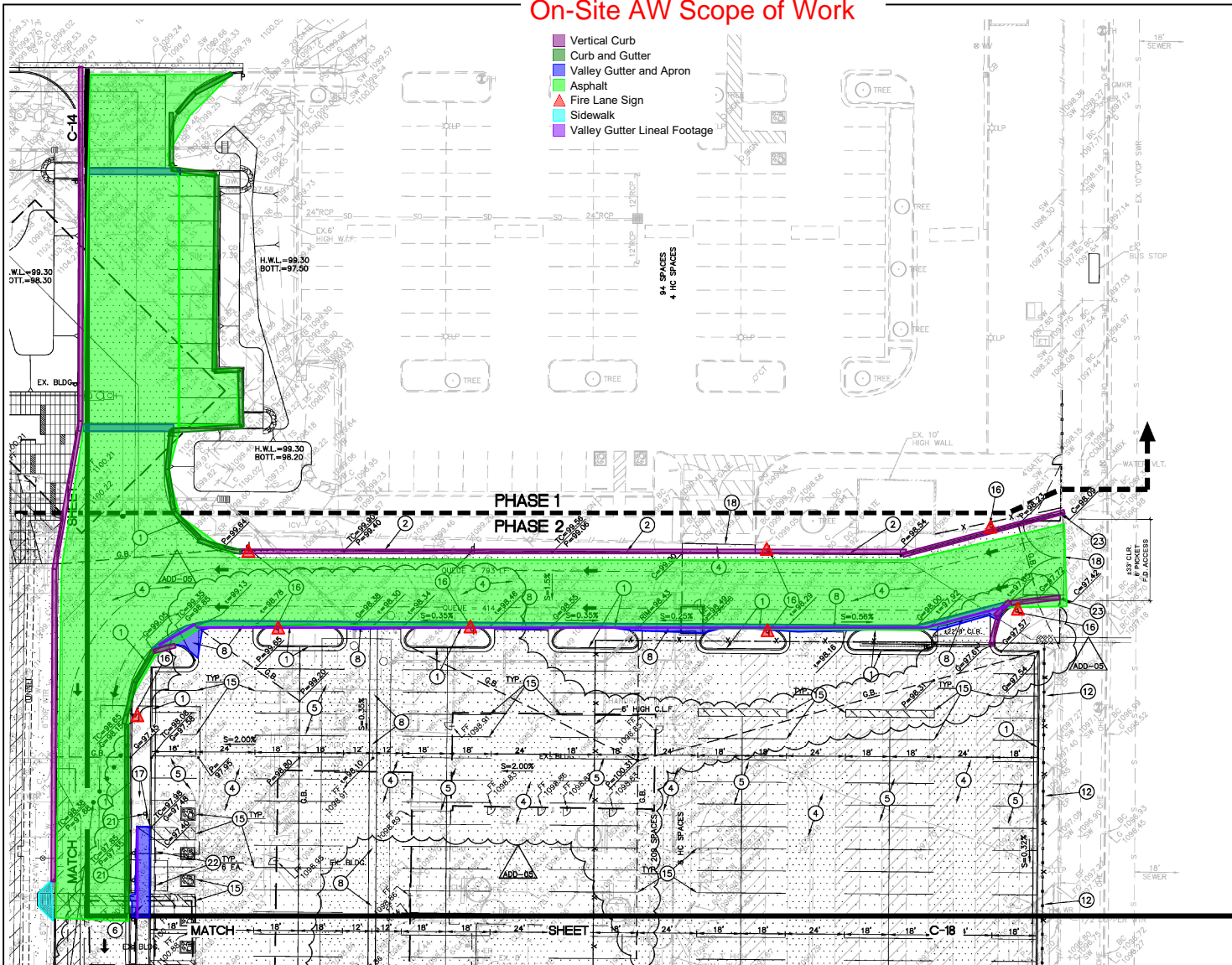
14 of 27

C-14

4503369 - 001.dwg

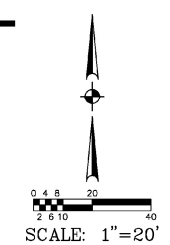
On-Site AW Scope of Work

- Vertical Curb
- Curb and Gutter
- Valley Gutter and Apron
- Asphalt
- Fire Lane Sign
- Sidewalk
- Valley Gutter Lineal Footage



GRADING AND DRAINAGE CONSTRUCTION NOTES:

- 1 CONSTRUCT CONCRETE VERTICAL CURB AND GUTTER (MAG STANDARD DETAIL NO. 220-1, TYPE A).
- 2 CONSTRUCT CONCRETE SINGLE CURB (MAG STANDARD DETAIL NO. 222, TYPE 'A').
- 3 INSTALL CONCRETE SIDEWALK RAMP, TYPE PER PLAN (SEE DETAIL ON SHEET C-3).
- 4 INSTALL ASPHALTIC CONCRETE PAVEMENT (3" A.C. (1/2" MIX) OVER 8" A.B.C. OVER COMPACTED SUBGRADE).
- 5 INSTALL ASPHALTIC CONCRETE PAVEMENT (2" A.C. (1/2" MIX) OVER 6" A.B.C. OVER COMPACTED SUBGRADE).
- 6 CONSTRUCT CONCRETE SIDEWALK (CITY OF PHOENIX STANDARD DETAIL NO. P1230). SEE LANDSCAPE DRAWINGS FOR SCORING AND FINISH.
- 7 INSTALL THICKENED PAVEMENT EDGE (MAG STANDARD DETAIL 201, TYPE B).
- 8 CONSTRUCT CONCRETE VALLEY GUTTER AND APRON (MAG STANDARD DETAIL NO. 240). WIDTH TO BE '3'.
- 9 CONSTRUCT SEVEN INCH (7") THICK 4,000 P.S.I. (AT 28 DAYS) CONCRETE PAVING OR CONCRETE FIRE LANE.
- 10 INSTALL DRAIN THROUGH LANDSCAPE AREA. (SEE DETAIL ON SHEET C-3).
- 11 INSTALL CONCRETE DRIVEWAY ENTRANCE (MAG STANDARD DETAIL 250-1).
- 12 STRAIGHT GRADE FROM 1" BELOW TOP OF CONCRETE SIDEWALK OR CURB AT A 5:1 MAXIMUM SLOPE TO MATCH EXISTING GRADE.
- 13 CONSTRUCT CONCRETE SPLASHPAD (SEE DETAIL SHEET C-3).
- 14 INSTALL TRASH ENCLOSURE (SEE ARCHITECTURAL DRAWINGS FOR DETAILS).
- 15 PAINT STRIPE PARKING LOT TO THE ALIGNMENTS INDICATED, INCLUDING THE PAINTING OF ALL HANDICAP SYMBOLS AND WALKWAYS, DIRECTIONAL ARROWS, PARKING STALLS, DROP-OFF AREAS, ETC. (TYPICAL).
- 16 INSTALL FIRE LANE SIGN PER CITY OF PHOENIX AND STATE FIRE MARSHAL'S REQUIREMENTS. POST AND BASE PER MAG STANDARD DETAIL NO. 131, TYPE 'B'.
- 17 TOP OF CURB TO BE FLUSH WITH CONCRETE OR PAVEMENT ELEVATION.
- 18 MATCH EXISTING GRADE.
- 19 SEE LANDSCAPE PLANS FOR FENCING AND GATES.
- 20 INSTALL CONCRETE LANDSCAPE CURB (SEE LANDSCAPE PLANS FOR DETAILS).
- 21 INSTALL HANDICAP PARKING SIGN PER CITY OF PHOENIX AND ADA REQUIREMENTS. POST AND BASE PER MAG STANDARD DETAIL NO. 131, TYPE 'B'. (TOP OF SIGN SHALL BE 6" ABOVE GRADE). TYPICAL AT EACH HANDICAP SPACE.
- 22 INSTALL PRECAST SAFETY CURB (MAG STANDARD DETAIL NO. 150, TYPE B-3).
- 23 INSTALL CURB TERMINATION (MAG STANDARD DETAIL NO. 222).
- 24 INSTALL "DO NOT ENTER" SIGN (M.U.T.C.D. R5-1, 36" X 36", WITH POST AND BASE PER MAG STANDARD DETAIL NO. 131, TYPE 'B' (TOP OF SIGN SHALL BE 6" ABOVE GRADE)).



8" WHITE ROUND 1 WAY CERAMIC BUTTON (CUSTOM PRODUCT CORPORATION MODEL RPMMCB(X)W) (TYP. 7 EA.)

From South Site Package ADD 05

HDLRGROUP

EXPRES E-30-25
2025.06.06 14:42:37-0707

Bowman
1900 N. Desert Drive, Suite 210
Tempe, Arizona 85288
Phone: (480) 348-0200
www.bowman.com

METRO TECH - PH2
PHOENIX UNION HIGH SCHOOL DISTRICT

CONSTRUCTION DOCUMENTS

05-20-25
REVISIONS
ADD-05 06-09-2025

4503369



15 of 27
C-15

- Vertical Curb
- Curb and Gutter
- Valley Gutter and Apron
- Asphalt
- Fire Lane Sign
- Valley Gutter Lineal Footage

FUNCTION NOTES:

On-Site AW Scope of Work

- 1) 3" HIGH CHAIN LINK FENCE WITH PLASTIC E DETAILED ON SHEET C-2). INSTALL ROUND BACKSTOP AND STOP AT DUGOUT. IE BY 8" DEEP CONCRETE CURB BENEATH CURB TO BE 1" ABOVE FINISHED GRADE.
- 2) INSTALL 6'-FOOT HIGH CHAIN LINK FENCE WITH PRIVACY SLATS AND A 6" WIDE BY 8" DEEP CONCRETE CURB BENEATH FENCE. TOP OF CURB TO BE 2" ABOVE FINISHED GRADE, EXCEPT AT CONCRETE SPLASHPAD WHERE TOP OF CURB ELEVATION IS EQUAL TO THE FINISH GRADE ELEVATION.
- 3) INSTALL BUILDING DUGOUT (SEE ARCHITECTURAL DRAWINGS FOR DETAILS).
- 4) INSTALL HOME PLATE, SCHUTT HOLLYWOOD BURY ALL HOME PLATE (#12807100) OR ENGINEER APPROVED EQUAL (SEE DETAIL ON SHEET C-2).

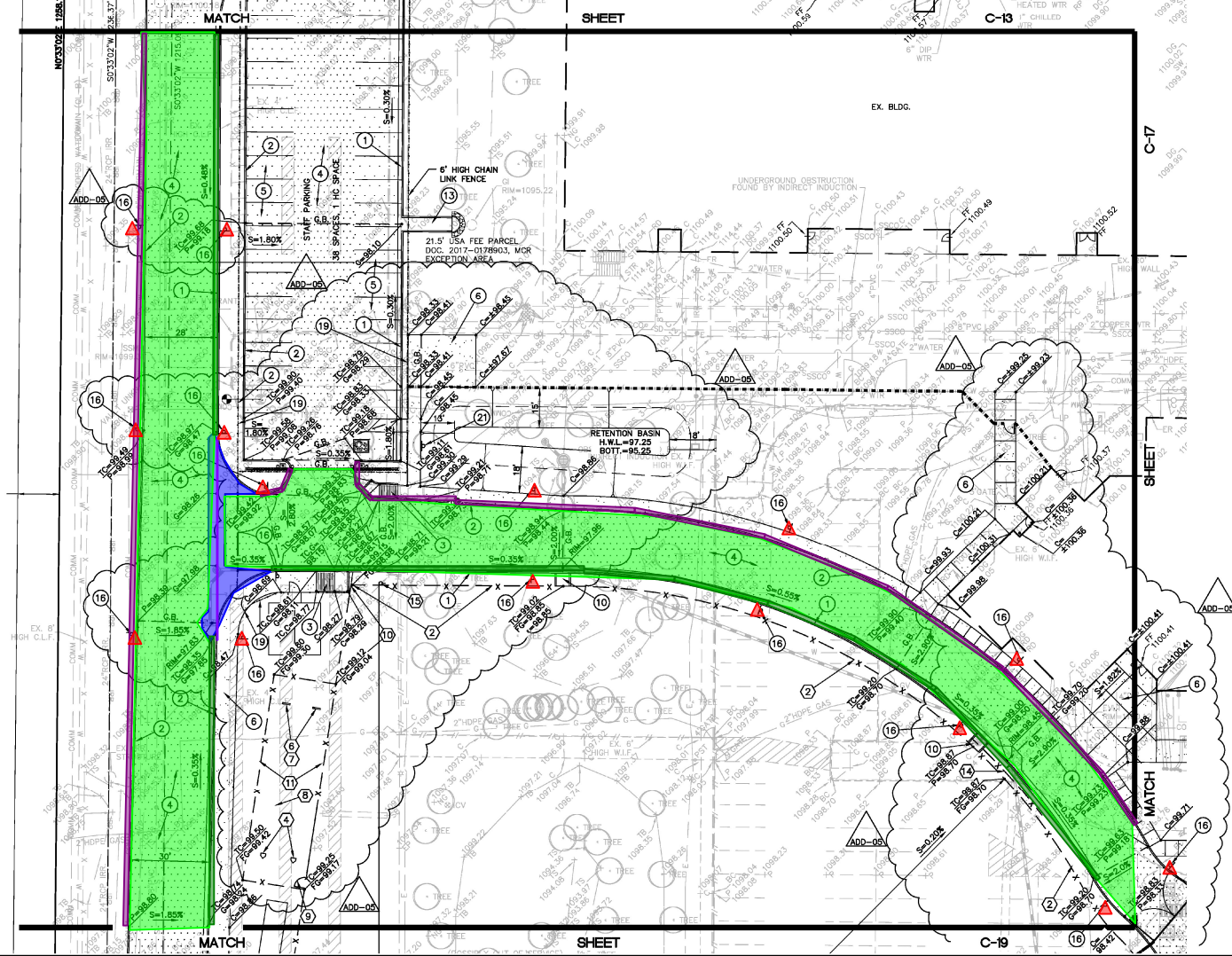
- 5) INSTALL BASE, SCHUTT BI HOLLYWOOD BASE W/ANC W/COLORED INDICATORS OR APPROVED EQUAL (SEE DETAIL ON SHEET C-2).
- 6) INSTALL PITCHING MOUND RUBBER, SCHUTT 4-SIDED PROFESSIONAL PITCHING RUBBER (#12808500 OR ENGINEER APPROVED EQUAL (SEE DETAIL ON SHEET C-2).
- 7) CONSTRUCT PITCHERS MOUND (SEE DETAIL ON SHEET C-2).
- 8) INSTALL 4" THICK INFIELD MIX. (SEE LANDSCAPE DRAWINGS).
- 9) INSTALL 8'-FOOT HIGH BY 4'-FOOT WIDE CHAIN LINK GATE WITH PRIVACY SLATS. INSTALL 6" WIDE BY 8" DEEP CONCRETE CURB BENEATH GATE.

- 10) INSTALL BATTING CAGE (SEE DETAIL ON SHEET C-2). INSTALL NET PER JUGSPORT BATTING CAGE #9 100'L X 18'W X 12'H #96 TWISTED KNOTTED BLACK POLYESTER.
- 11) INSTALL 8'-FOOT HIGH BY 8'-FOOT WIDE CHAIN LINK DOUBLE SWING GATE. INSTALL 6" WIDE BY 8" DEEP CONCRETE CURB BENEATH GATE.
- 12) INSTALL 8'-FOOT HIGH BY 12'-FOOT WIDE CHAIN LINK DOUBLE SWING GATE. INSTALL 6" WIDE BY 8" DEEP CONCRETE CURB BENEATH GATE.
- 13) CONSTRUCT FENCE BLACKOUT (SEE DETAIL ON SHEET C-2).

- 14) INSTALL FOUL POLE (SEE DETAIL ON SHEET C-2).

GRADING AND DRAINAGE CONSTRUCTION NOTES:

- 1) CONSTRUCT CONCRETE VERTICAL CURB AND GUTTER (MAG STANDARD DETAIL NO. 220-1, TYPE A).
- 2) CONSTRUCT CONCRETE SINGLE CURB (MAG STANDARD DETAIL NO. 222, TYPE 'A').
- 3) INSTALL CONCRETE SIDEWALK RAMP, TYPE PER PLAN (SEE DETAIL ON SHEET C-3).
- 4) INSTALL ASPHALTIC CONCRETE PAVEMENT (3" A.C. (1/2" MIX) OVER 8" A.B.C. OVER COMPACTED SUBGRADE).
- 5) INSTALL ASPHALTIC CONCRETE PAVEMENT (2" A.C. (1/2" MIX) OVER 6" A.B.C. OVER COMPACTED SUBGRADE).
- 6) CONSTRUCT CONCRETE SIDEWALK (CITY OF PHOENIX STANDARD DETAIL NO. P1230). SEE LANDSCAPE DRAWINGS FOR SCORING AND FINISH.
- 7) INSTALL THICKENED PAVEMENT EDGE (MAG STANDARD DETAIL 201, TYPE B).
- 8) CONSTRUCT CONCRETE VALLEY GUTTER AND APRON (MAG STANDARD DETAIL NO. 240). WIDTH TO BE 3'.
- 9) CONSTRUCT SEVEN INCH (7") THICK 4,000 P.S.I. (AT 28 DAYS) CONCRETE PAVING OR CONCRETE FIRE LANE.
- 10) INSTALL DRAIN THROUGH LANDSCAPE AREA. (SEE DETAIL ON SHEET C-3).
- 11) INSTALL CONCRETE DRIVEWAY ENTRANCE (MAG STANDARD DETAIL 250-1).
- 12) STRAIGHT GRADE FROM 1" BELOW TOP OF CONCRETE SIDEWALK OR CURB AT A 5:1 MAXIMUM SLOPE TO MATCH EXISTING GRADE.
- 13) CONSTRUCT CONCRETE SPLASHPAD (SEE DETAIL SHEET C-3).
- 14) INSTALL TRASH ENCLOSURE (SEE ARCHITECTURAL DRAWINGS FOR DETAILS).
- 15) PAINT STRIPE PARKING LOT TO THE ALIGNMENTS INDICATED, INCLUDING THE PAINTING OF ALL HANDICAP SYMBOLS AND WALKWAYS, DIRECTIONAL ARROWS, PARKING STALLS, DROP-OFF AREAS, ETC. (TYPICAL).
- 16) INSTALL FIRE LANE SIGN PER CITY OF PHOENIX AND STATE FIRE MARSHAL'S REQUIREMENTS. POST AND BASE PER MAG STANDARD DETAIL NO. 131, TYPE 'B'.
- 17) TOP OF CURB TO BE FLUSH WITH CONCRETE OR PAVEMENT ELEVATION.
- 18) MATCH EXISTING GRADE.
- 19) SEE LANDSCAPE PLANS FOR FENCING AND GATES.
- 20) INSTALL CONCRETE LANDSCAPE CURB (SEE LANDSCAPE PLANS FOR DETAILS).
- 21) INSTALL HANDICAP PARKING SIGN PER CITY OF PHOENIX AND ADA REQUIREMENTS: POST AND BASE PER MAG STANDARD DETAIL NO. 131, TYPE 'B'. (TOP OF SIGN SHALL BE 6" ABOVE GRADE). TYPICAL AT EACH HANDICAP SPACE.
- 22) INSTALL PRECAST SAFETY CURB (MAG STANDARD DETAIL NO. 150, TYPE B-3).
- 23) INSTALL CURB TERMINATION (MAG STANDARD DETAIL NO. 222).
- 24) INSTALL "DO NOT ENTER" SIGN (M.U.T.C.D. R5-1. 36" X 36", WITH POST AND BASE PER MAG STANDARD DETAIL NO. 131, TYPE 'B' (TOP OF SIGN SHALL BE 6" ABOVE GRADE)).



From South Site Package ADD 05



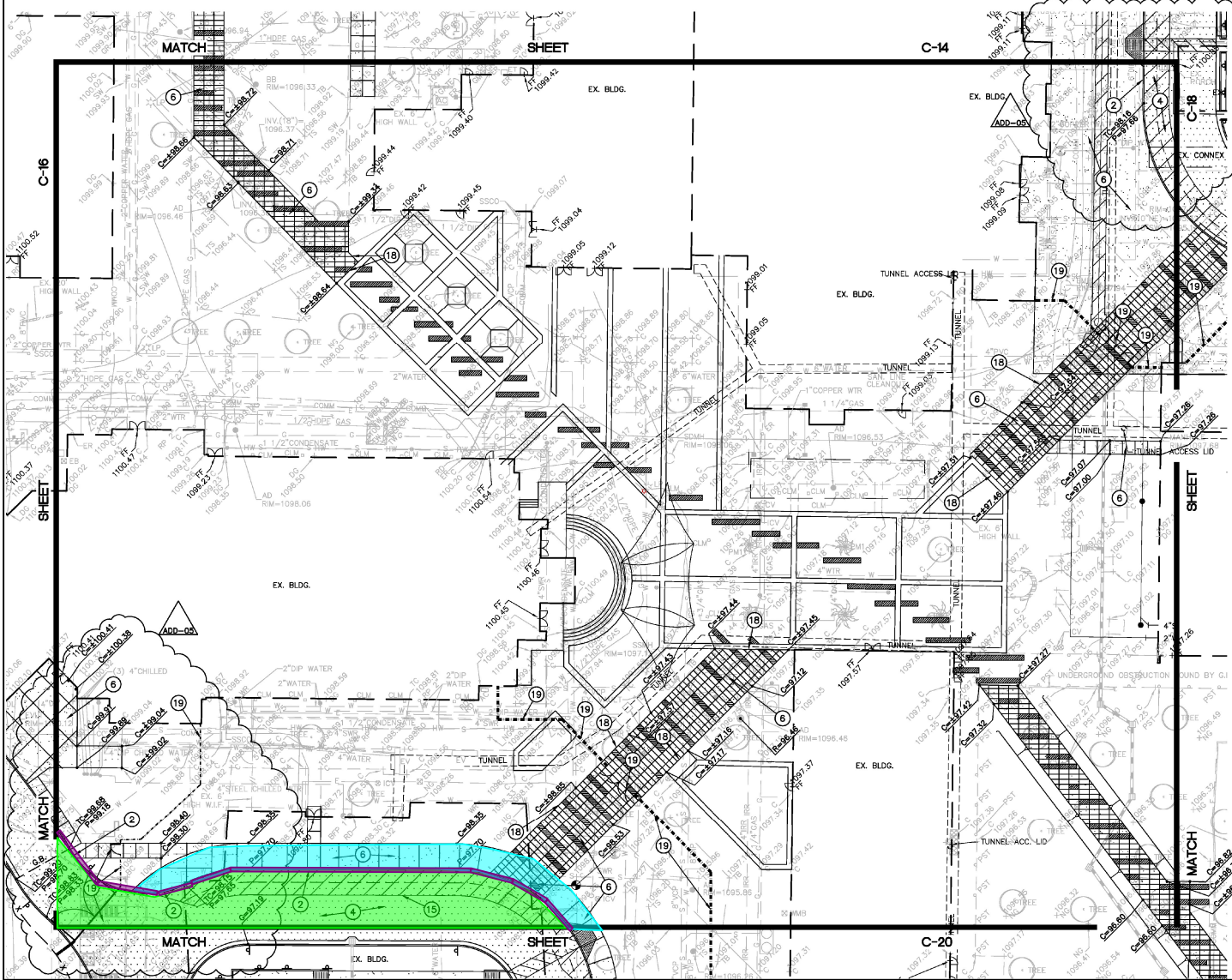
METRO TECH - PH2
PHOENIX UNION HIGH SCHOOL DISTRICT

CONSTRUCTION DOCUMENTS
05-28-25
REVISIONS
ADD-05 06-09-2025

4503369

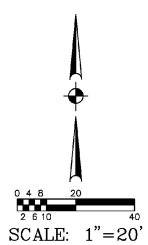
16 OF 27
C-16

On-Site AW Scope of Work



GRADING AND DRAINAGE CONSTRUCTION NOTES:

- 1 CONSTRUCT CONCRETE VERTICAL CURB AND GUTTER (MAG STANDARD DETAIL NO. 220-1, TYPE A).
- 2 CONSTRUCT CONCRETE SINGLE CURB (MAG STANDARD DETAIL NO. 222, TYPE 'A').
- 3 INSTALL CONCRETE SIDEWALK RAMP, TYPE PER PLAN (SEE DETAIL ON SHEET C-3).
- 4 INSTALL ASPHALTIC CONCRETE PAVEMENT (3" A.C. (1/2" MIX) OVER 8" A.B.C. OVER COMPACTED SUBGRADE).
- 5 INSTALL ASPHALTIC CONCRETE PAVEMENT (2" A.C. (1/2" MIX) OVER 6" A.B.C. OVER COMPACTED SUBGRADE).
- 6 CONSTRUCT CONCRETE SIDEWALK (CITY OF PHOENIX STANDARD DETAIL NO. P1230). SEE LANDSCAPE DRAWINGS FOR SCORING AND FINISH.
- 7 INSTALL THICKENED PAVEMENT EDGE (MAG STANDARD DETAIL 201, TYPE B).
- 8 CONSTRUCT CONCRETE VALLEY GUTTER AND APRON (MAG STANDARD DETAIL NO. 240). WIDTH TO BE 3'.
- 9 CONSTRUCT SEVEN INCH (7") THICK 4,000 P.S.I. (AT 28 DAYS) CONCRETE PAVING OR CONCRETE FIRE LANE.
- 10 INSTALL DRAIN THROUGH LANDSCAPE AREA. (SEE DETAIL ON SHEET C-3).
- 11 INSTALL CONCRETE DRIVEWAY ENTRANCE (MAG STANDARD DETAIL 250-1).
- 12 STRAIGHT GRADE FROM 1" BELOW TOP OF CONCRETE SIDEWALK OR CURB AT A 5:1 MAXIMUM SLOPE TO MATCH EXISTING GRADE.
- 13 CONSTRUCT CONCRETE SPLASHPAD (SEE DETAIL SHEET C-3).
- 14 INSTALL TRASH ENCLOSURE (SEE ARCHITECTURAL DRAWINGS FOR DETAILS).
- 15 PAINT STRIPE PARKING LOT TO THE ALIGNMENTS INDICATED, INCLUDING THE PAINTING OF ALL HANDICAP SYMBOLS AND WALKWAYS, DIRECTIONAL ARROWS, PARKING STALLS, DROP-OFF AREAS, ETC. (TYPICAL).
- 16 INSTALL FIRE LANE SIGN PER CITY OF PHOENIX AND STATE FIRE MARSHAL'S REQUIREMENTS. POST AND BASE PER MAG STANDARD DETAIL NO. 131, TYPE 'B'.
- 17 TOP OF CURB TO BE FLUSH WITH CONCRETE OR PAVEMENT ELEVATION.
- 18 MATCH EXISTING GRADE.
- 19 SEE LANDSCAPE PLANS FOR FENCING AND GATES.
- 20 INSTALL CONCRETE LANDSCAPE CURB (SEE LANDSCAPE PLANS FOR DETAILS).
- 21 INSTALL HANDICAP PARKING SIGN PER CITY OF PHOENIX AND ADA REQUIREMENTS. POST AND BASE PER MAG STANDARD DETAIL NO. 131, TYPE 'B'. (TOP OF SIGN SHALL BE 6" ABOVE GRADE). TYPICAL AT EACH HANDICAP SPACE.
- 22 INSTALL PRECAST SAFETY CURB (MAG STANDARD DETAIL NO. 150, TYPE B-3).
- 23 INSTALL CURB TERMINATION (MAG STANDARD DETAIL NO. 222).
- 24 INSTALL "DO NOT ENTER" SIGN (M.U.T.C.D. R5-1, 36" X 36", WITH POST AND BASE PER MAG STANDARD DETAIL NO. 131, TYPE 'B' (TOP OF SIGN SHALL BE 6" ABOVE GRADE)).

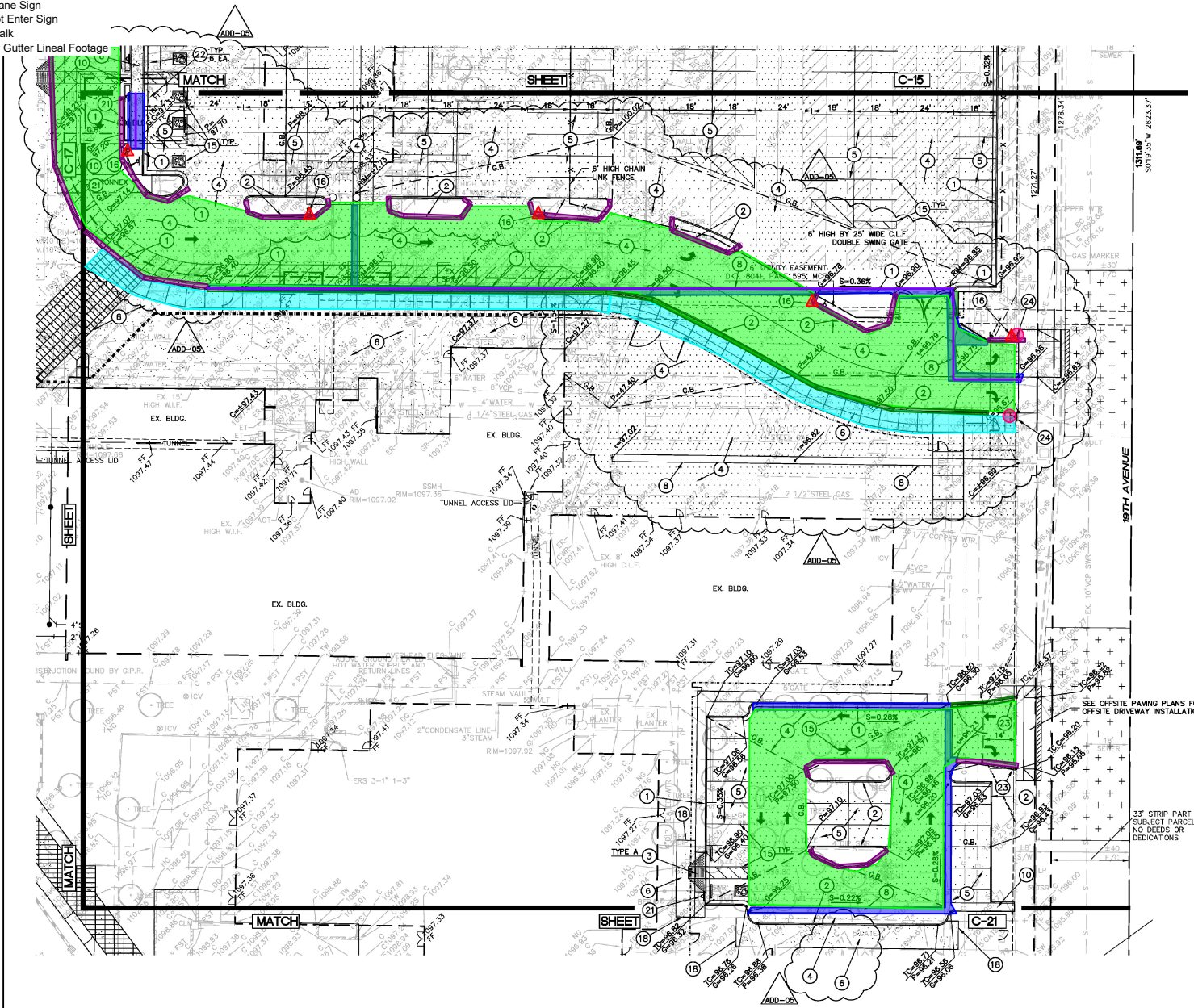


From South Site Package ADD 05



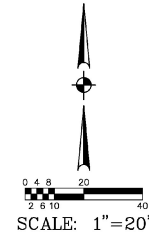
- Valley Gutter and Apron
- Vertical Curb
- Curb and Gutter
- Asphalt
- ▲ Fire Lane Sign
- Do Not Enter Sign
- Sidewalk
- Valley Gutter Lineal Footage

On-Site AW Scope of Work



GRADING AND DRAINAGE CONSTRUCTION NOTES:

- ① CONSTRUCT CONCRETE VERTICAL CURB AND GUTTER (MAG STANDARD DETAIL NO. 220-1, TYPE A).
- ② CONSTRUCT CONCRETE SINGLE CURB (MAG STANDARD DETAIL NO. 222, TYPE 'A').
- ③ INSTALL CONCRETE SIDEWALK RAMP, TYPE PER PLAN (SEE DETAIL ON SHEET C-3).
- ④ INSTALL ASPHALTIC CONCRETE PAVEMENT (3" A.C. (1/2" MIX) OVER 8" A.B.C. OVER COMPACTED SUBGRADE).
- ⑤ INSTALL ASPHALTIC CONCRETE PAVEMENT (2" A.C. (1/2" MIX) OVER 6" A.B.C. OVER COMPACTED SUBGRADE).
- ⑥ CONSTRUCT CONCRETE SIDEWALK (CITY OF PHOENIX STANDARD DETAIL NO. P1230). SEE LANDSCAPE DRAWINGS FOR SCORING AND FINISH.
- ⑦ INSTALL THICKENED PAVEMENT EDGE (MAG STANDARD DETAIL 201, TYPE B).
- ⑧ CONSTRUCT CONCRETE VALLEY GUTTER AND APRON (MAG STANDARD DETAIL NO. 240), WIDTH TO BE 3'.
- ⑨ CONSTRUCT SEVEN INCH (7") THICK 4,000 P.S.I. (AT 28 DAYS) CONCRETE PAVING OR CONCRETE FIRE LANE.
- ⑩ INSTALL DRAIN THROUGH LANDSCAPE AREA. (SEE DETAIL ON SHEET C-3).
- ⑪ INSTALL CONCRETE DRIVEWAY ENTRANCE (MAG STANDARD DETAIL 250-1).
- ⑫ STRAIGHT GRADE FROM 1" BELOW TOP OF CONCRETE SIDEWALK OR CURB AT A 5:1 MAXIMUM SLOPE TO MATCH EXISTING GRADE.
- ⑬ CONSTRUCT CONCRETE SPLASHPAD (SEE DETAIL SHEET C-3).
- ⑭ INSTALL TRASH ENCLOSURE (SEE ARCHITECTURAL DRAWINGS FOR DETAILS).
- ⑮ PAINT STRIPE PARKING LOT TO THE ALIGNMENTS INDICATED, INCLUDING THE PAINTING OF ALL HANDICAP SYMBOLS AND WALKWAYS, DIRECTIONAL ARROWS, PARKING STALLS, DROP-OFF AREAS, ETC. (TYPICAL).
- ⑯ INSTALL FIRE LANE SIGN PER CITY OF PHOENIX AND STATE FIRE MARSHAL'S REQUIREMENTS. POST AND BASE PER MAG STANDARD DETAIL NO. 131, TYPE 'B'.
- ⑰ TOP OF CURB TO BE FLUSH WITH CONCRETE OR PAVEMENT ELEVATION.
- ⑱ MATCH EXISTING GRADE.
- ⑲ SEE LANDSCAPE PLANS FOR FENCING AND GATES.
- ⑳ INSTALL CONCRETE LANDSCAPE CURB (SEE LANDSCAPE PLANS FOR DETAILS).
- ㉑ INSTALL HANDICAP PARKING SIGN PER CITY OF PHOENIX AND ADA REQUIREMENTS. POST AND BASE PER MAG STANDARD DETAIL NO. 131, TYPE 'B'. (TOP OF SIGN SHALL BE 6" ABOVE GRADE). TYPICAL AT EACH HANDICAP SPACE.
- ㉒ INSTALL PRECAST SAFETY CURB (MAG STANDARD DETAIL NO. 150, TYPE B-3).
- ㉓ INSTALL CURB TERMINATION (MAG STANDARD DETAIL NO. 222).
- ㉔ INSTALL "DO NOT ENTER" SIGN (M.U.T.C.D. R5-1, 36" X 36", WITH POST AND BASE PER MAG STANDARD DETAIL NO. 131, TYPE 'B' (TOP OF SIGN SHALL BE 6" ABOVE GRADE)).



From South Site Package ADD 05

EDLGROUP

EXPRESSES 5-30-25
2025.06.06 14:42:37-0707

Bowman

1900 N. Desert Blvd, Suite 210
 Tempe, Arizona 85288
 Phone: (480) 948-0000

METRO TECH - PH2

PHOENIX UNION HIGH SCHOOL DISTRICT

CONSTRUCTION DOCUMENTS

05-20-25
 REVISIONS
 ADD-05 06-09-2025

4503369

18 OF 27
 C-18

- Vertical Curb
- Curb and Gutter
- Asphalt

CONSTRUCTION NOTES:

1. INSTALL 24-FOOT HIGH CHAIN LINK FENCE WITH PLASTIC BASEBOARD (SEE DETAIL ON SHEET C-2). INSTALL BASEBOARDS AROUND BACKSTOP AND STOP AT DUGOUT. INSTALL 10" WIDE BY 8" DEEP CONCRETE CURB BENEATH FENCE. TOP OF CURB TO BE 1" ABOVE FINISHED GRADE.
2. INSTALL 6-FOOT HIGH CHAIN LINK FENCE WITH PRIVACY SLATS AND A 6" WIDE BY 8" DEEP CONCRETE CURB BENEATH FENCE. TOP OF CURB TO BE 2" ABOVE FINISHED GRADE, EXCEPT AT CONCRETE SPLASHPAD WHERE TOP OF CURB ELEVATION IS EQUAL TO THE FINISH GRADE ELEVATION.
3. INSTALL BUILDING DUGOUT (SEE ARCHITECTURAL DRAWINGS FOR DETAILS).
4. INSTALL HOME PLATE, SCHUTT HOLLYWOOD BURY ALL HOME PLATE (#12807100) OR ENGINEER APPROVED EQUAL (SEE DETAIL ON SHEET C-2).
5. INSTALL BASE, SCHUTT BBPLS ORIGINAL JACK CORBETT HOLLYWOOD BASE W/ANCHORS. SCHUTT ANCHOR PLUG W/COLORED INDICATORS OR APPROVED EQUAL (SEE DETAIL ON SHEET C-2).

6. INSTALL PITCHING MOUND RUBBER, PROFESSIONAL PITCHING RUBBER (1" ENGINEER APPROVED EQUAL (SEE C-2).
7. CONSTRUCT PITCHERS MOUND (SEE DETAIL ON SHEET C-2).
8. INSTALL 4" THICK INFIELD MIX. (SEE LANDSCAPE DRAWINGS).
9. INSTALL 8-FOOT HIGH BY 4-FOOT WIDE CHAIN LINK GATE WITH PRIVACY SLATS. INSTALL 6" WIDE BY 8" DEEP CONCRETE CURB BENEATH GATE.
10. INSTALL 8-FOOT HIGH CHAIN LINK FENCE WITH PRIVACY SLATS AND A 6" WIDE BY 8" DEEP CONCRETE CURB BENEATH FENCE. TOP OF CURB TO BE 1" ABOVE FINISHED GRADE, EXCEPT AT THE OUTFIELD FENCE WHERE IT TRANSITIONS IN 28- FEET TO BE 2" ABOVE FINISH GRADE.

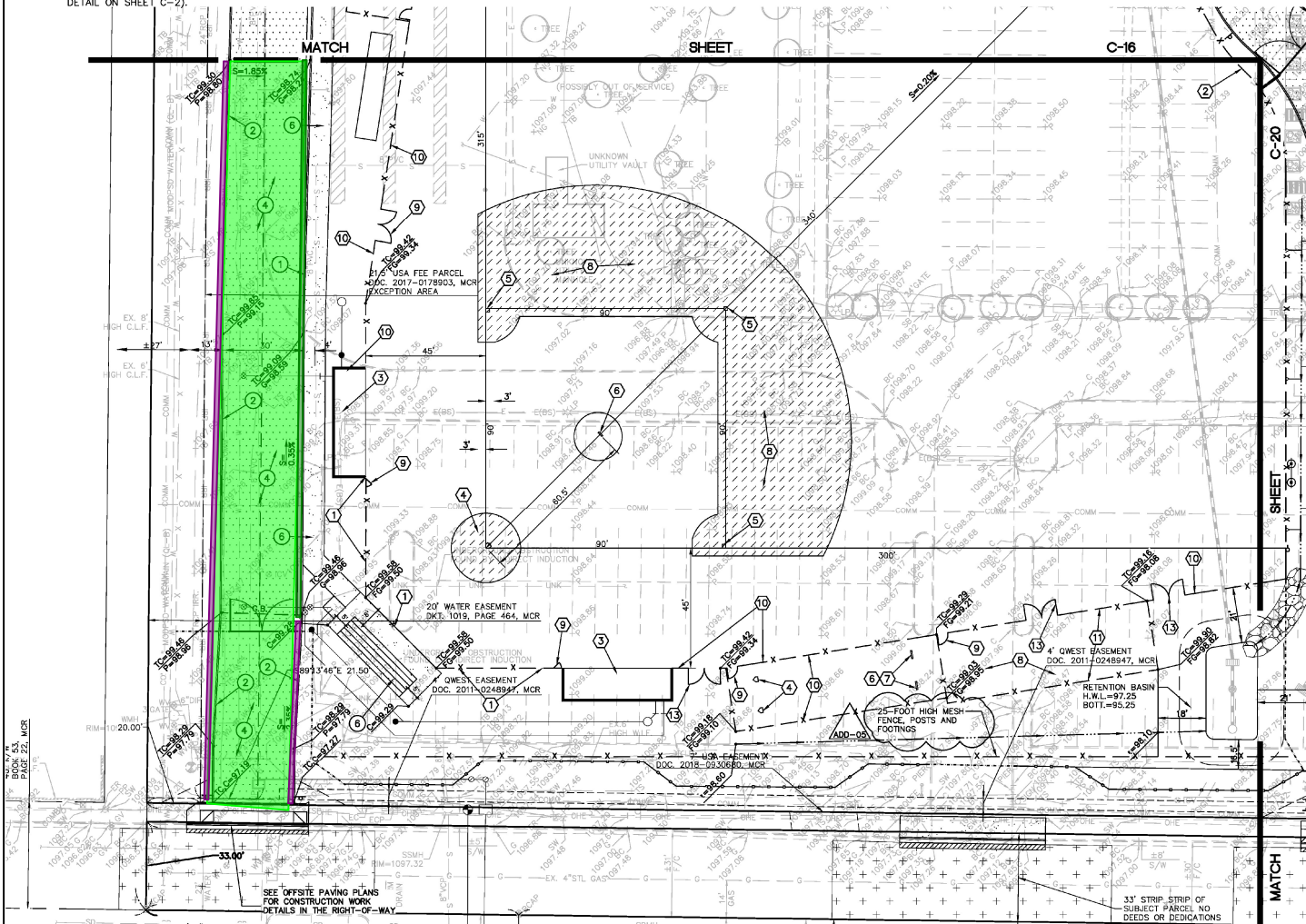
On-Site AW Scope of Work

11. INSTALL BATTING CAGE (SEE DETAIL ON SHEET C-2). INSTALL NET PER JUGSPORT BATTING CAGE #9 100'L X 18'W X 12'H #96 TWISTED KNOTTED BLACK POLYESTER.
12. INSTALL 8-FOOT HIGH BY 8-FOOT WIDE CHAIN LINK DOUBLE SWING GATE. INSTALL 6" WIDE BY 8" DEEP CONCRETE CURB BENEATH GATE.
13. INSTALL 8-FOOT HIGH BY 12-FOOT WIDE CHAIN LINK DOUBLE SWING GATE. INSTALL 6" WIDE BY 8" DEEP CONCRETE CURB BENEATH GATE.
14. CONSTRUCT FENCE BLACKOUT (SEE DETAIL ON SHEET C-2).
15. INSTALL FOUL POLE (SEE DETAIL ON SHEET C-2).

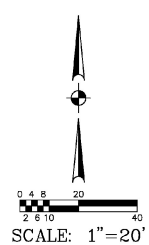
± WITH PRIVACY
CRETE CURB
" ABOVE FINISHED
GRADE, EXCEPT AT THE END NEAR THE OUTFIELD FENCE
WHERE IT TRANSITIONS IN 28- FEET TO BE 2" ABOVE
FINISH GRADE.

**GRADING AND DRAINAGE
CONSTRUCTION NOTES:**

1. CONSTRUCT CONCRETE VERTICAL CURB AND GUTTER (MAG STANDARD DETAIL NO. 220-1, TYPE A).
2. CONSTRUCT CONCRETE SINGLE CURB (MAG STANDARD DETAIL NO. 222, TYPE 'A').
3. INSTALL CONCRETE SIDEWALK RAMP, TYPE PER PLAN (SEE DETAIL ON SHEET C-3).
4. INSTALL ASPHALTIC CONCRETE PAVEMENT (3" A.C. (1/2" MIX) OVER 8" A.B.C. OVER COMPACTED SUBGRADE).
5. INSTALL ASPHALTIC CONCRETE PAVEMENT (2" A.C. (1/2" MIX) OVER 6" A.B.C. OVER COMPACTED SUBGRADE).
6. CONSTRUCT CONCRETE SIDEWALK (CITY OF PHOENIX STANDARD DETAIL NO. P1230). SEE LANDSCAPE DRAWINGS FOR SCORING AND FINISH.
7. INSTALL THICKENED PAVEMENT EDGE (MAG STANDARD DETAIL 201, TYPE B).
8. CONSTRUCT CONCRETE VALLEY GUTTER AND APRON (MAG STANDARD DETAIL NO. 240). WIDTH TO BE 3'.
9. CONSTRUCT SEVEN INCH (7") THICK 4,000 P.S.I. (AT 28 DAYS) CONCRETE PAVING OR CONCRETE FIRE LANE.
10. INSTALL DRAIN THROUGH LANDSCAPE AREA. (SEE DETAIL ON SHEET C-3).
11. INSTALL CONCRETE DRIVEWAY ENTRANCE (MAG STANDARD DETAIL 250-1).
12. STRAIGHT GRADE FROM 1" BELOW TOP OF CONCRETE SIDEWALK OR CURB AT A 5:1 MAXIMUM SLOPE TO MATCH EXISTING GRADE.
13. CONSTRUCT CONCRETE SPLASHPAD (SEE DETAIL SHEET C-3).
14. INSTALL TRASH ENCLOSURE (SEE ARCHITECTURAL DRAWINGS FOR DETAILS).
15. PAINT STRIPE PARKING LOT TO THE ALIGNMENTS INDICATED, INCLUDING THE PAINTING OF ALL HANDICAP SYMBOLS AND WALKWAYS, DIRECTIONAL ARROWS, PARKING STALLS, DROP-OFF AREAS, ETC. (TYPICAL).
16. INSTALL FIRE LANE SIGN PER CITY OF PHOENIX AND STATE FIRE MARSHAL'S REQUIREMENTS. POST AND BASE PER MAG STANDARD DETAIL NO. 131, TYPE 'B'.
17. TOP OF CURB TO BE FLUSH WITH CONCRETE OR PAVEMENT ELEVATION.
18. MATCH EXISTING GRADE.
19. SEE LANDSCAPE PLANS FOR FENCING AND GATES.
20. INSTALL CONCRETE LANDSCAPE CURB (SEE LANDSCAPE PLANS FOR DETAILS).
21. INSTALL HANDICAP PARKING SIGN PER CITY OF PHOENIX AND ADA REQUIREMENTS. POST AND BASE PER MAG STANDARD DETAIL NO. 131, TYPE 'B'. (TOP OF SIGN SHALL BE 6" ABOVE GRADE). TYPICAL AT EACH HANDICAP SPACE.
22. INSTALL PRECAST SAFETY CURB (MAG STANDARD DETAIL NO. 150, TYPE B-3).
23. INSTALL CURB TERMINATION (MAG STANDARD DETAIL NO. 222).



ADD-05



NOTE:
SEE LANDSCAPE PLANS FOR ADDITIONAL
CONCRETE SIDEWALK.



From South Site Package ADD 05

HDLRGROUP

EXPIRES 8-30-25
2025.06.06 14:42:37-0707

Bowman

METRO TECH - PH2

PHOENIX UNION HIGH SCHOOL DISTRICT

CONSTRUCTION DOCUMENTS

05-20-25
REVISED
ADD-05 06-09-2025

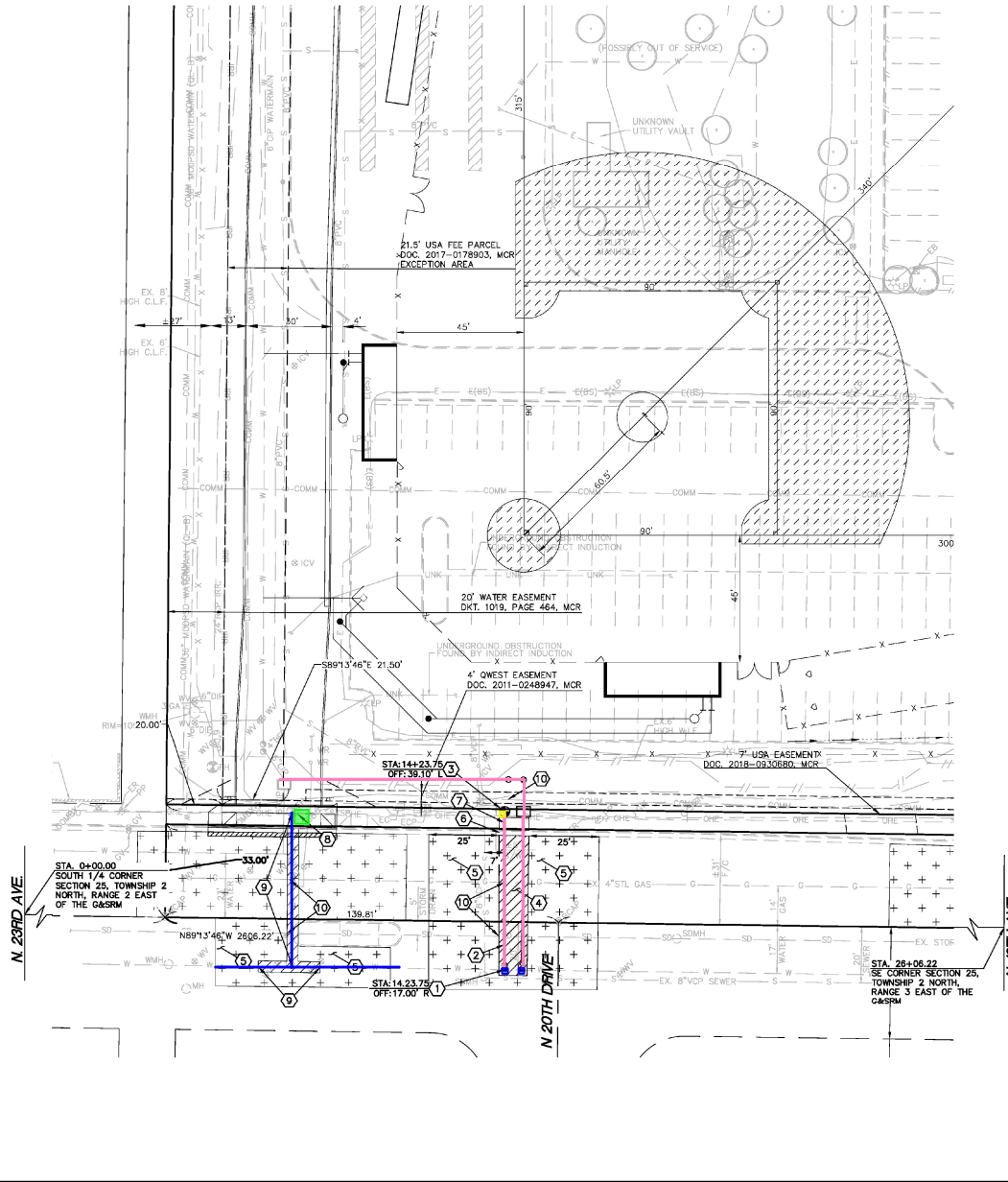
4503369

19 OF 27

C-19

- Taping Sleeve and Gate Valve
 - Iron Pipe
 - Salvaged Fire Hydrant
 - Remove and Replace Water Line
 - Salvage Existing Fire Hydrant
- URB ELEVATION
 - OLL CURB ELEVATION
- SD — EXISTING STORM DRAIN LINE (MAP DRAWN)
 - S — EXISTING SEWER LINE (MAP DRAWN)
 - PROPOSED SAWCUT
 - PROPOSED CONCRETE
 - PROPOSED PAVEMENT RESTORATION
- UD — EXISTING DECOMPOSED GRANITE ELEVATION
 - BRK — EXISTING BRICK ELEVATION
 - C — EXISTING CONCRETE ELEVATION
 - EP — EXISTING EDGE OF PAVEMENT ELEVATION
 - FC — EXISTING FACE OF CURB ELEVATION
 - FF — EXISTING FINISH FLOOR ELEVATION
 - FL — EXISTING FLOW LINE ELEVATION
 - G — EXISTING GUTTER ELEVATION
 - LC — EXISTING LANDSCAPE CURB ELEVATION
 - NG — EXISTING NATURAL GROUND ELEVATION
 - P — EXISTING PAVEMENT ELEVATION
 - SB — EXISTING SPEEDBUMP ELEVATION
 - STR — EXISTING STAIR ELEVATION
 - STW — EXISTING SIDEWALK ELEVATION
 - T — EXISTING TOP OF BERM ELEVATION
 - TD — EXISTING TRENCH DRAIN ELEVATION
 - TS — EXISTING TOP OF SLOPE ELEVATION
 - TW — EXISTING TOP OF WALL ELEVATION
 - WH — EXISTING WEEP HOLE ELEVATION
 - WC — EXISTING TOP OF CURB ELEVATION
 - COMB — EXISTING COMMUNICATION BOX
 - COMMH — EXISTING COMMUNICATION MANHOLE (WITH RIM ELEVATION)
 - OR — EXISTING COMMUNICATION RISER
 - CT — EXISTING CELL TOWER
 - EMH — EXISTING ELECTRICAL MANHOLE (WITH RIM ELEVATION)
 - EB — EXISTING ELECTRICAL BOX
 - ER — EXISTING ELECTRICAL RISER
 - LP — EXISTING LIGHTPOLE
 - EBB — EXISTING ELECTRICAL BREAKER BOX
 - ECAB — EXISTING ELECTRICAL CABINET
 - ET — EXISTING ELECTRICAL TRANSFORMER
 - ICV — EXISTING IRRIGATION CONTROL VALVE
 - IDB — EXISTING IRRIGATION DRIP BOX
 - ARD — EXISTING ARE DRAIN (WITH RIM ELEVATION)
 - BBB — EXISTING BUBBLER BOX (WITH RIM ELEVATION)
 - DB — EXISTING DRYWELL (WITH RIM ELEVATION)
 - CB — EXISTING CATCH BASIN (WITH RIM ELEVATION)
 - SDC — EXISTING STORM DRAIN CLEANOUT
 - GI — EXISTING GREASE INTERCEPTOR (WITH RIM ELEVATION)
 - SSM — EXISTING SANITARY SEWER MANHOLE (WITH RIM ELEVATION)
 - SSC — EXISTING SANITARY SEWER CLEANOUT
 - WV — EXISTING WATER VAULT
 - WMH — EXISTING WATER MANHOLE (WITH RIM ELEVATION)
 - WR — EXISTING WATER RISER
 - WV — EXISTING WATER VALVE
 - DCV — EXISTING DOUBLE CHECK VALVE
 - BFP — EXISTING BACKFLOW PREVENTOR
 - FH — EXISTING FIRE HYDRANT
 - FDC — EXISTING FIRE DEPARTMENT CONNECTION
 - CLM — EXISTING COLUMN
 - PB — EXISTING PIPE BOLLARD
 - SIGN — EXISTING SIGN
 - CVL — EXISTING COMMUNICATION VAULT
 - TREE — EXISTING TREE
 - EL — EXISTING ELECTRICAL LINE (BLUESTAKE)
 - EM — EXISTING ELECTRICAL LINE (MAP DRAWN)
 - COMM — EXISTING COMMUNICATION LINE (MAP DRAWN)
 - G — EXISTING GAS LINE (MAP DRAWN)
 - IRR — EXISTING IRRIGATION LINE (MAP DRAWN)
 - W — EXISTING WATER LINE (MAP DRAWN)

Off-Site AW Scope of Work



PUBLIC FIRE LINE CONSTRUCTION NOTES:

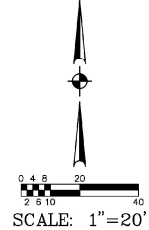
1. INSTALL 10" X 6" TAPPING SLEEVE AND 8" GATE VALVE WITH VALVE BOX AND COVER (MAG STANDARD DETAIL NO.'S 340 AND CITY OF PHOENIX DETAIL NO.'S, P1391-1, TYPE 'A' AND 270).
2. INSTALL 6" POLYWRAPPED DUCTILE IRON PIPE (PRESSURE CLASS 350, MINIMUM THICKNESS CLASS 50) WATER LINE
3. INSTALL SALVAGED FIRE HYDRANT (CITY OF PHOENIX STANDARD DETAIL NO P1360). REPAINT AND EST THE FIRE HYDRANT PER CITY OF PHOENIX REQUIREMENTS.
4. SAWCUT, REMOVE AND REPLACE EXISTING A.C. PAVEMENT (MAG SPECIFICATION SECTION 336 AND CITY OF PHOENIX STANDARD DETAIL NO. P1200 OR MATCH EXISTING, WHICHEVER IS GREATER).
5. MILL AND OVERLAY THE EXISTING PAVEMENT WITH CRACK AND MICRO-SEAL PER CITY OF PHOENIX STREET CUT POLICY (TRT 00164 AND ORDINANCE G-6308).
6. SAWCUT, REMOVE AND REPLACE EXISTING CONCRETE VERTICAL CURB AND GUTTER TO NEAREST JOINT, OR AS DIRECTED BY CITY INSPECTOR (MAG STANDARD DETAIL NO. 220-1, TYPE 'A'). BACKFILL WITH HALF SACK SLURRY.
7. SAWCUT, REMOVE AND REPLACE EXISTING CONCRETE SIDEWALK TO NEAREST JOINT, OR AS DIRECTED BY THE CITY INSPECTOR (CITY OF PHOENIX STANDARD DETAIL P1230). BACKFILL WITH HALF SACK SLURRY.
8. REMOVE AND SALVAGE EXISTING FIRE HYDRANT FOR LATER REINSTALLATION.
9. REMOVE EXISTING WATER LINE AND EXISTING WATER VALVE UP TO THE WATER MAIN. REMOVE 10' IN EACH DIRECTION OF THE WATER MAIN OR AS NEEDED TO REMOVE THE EXISTING TEE. A NEW SECTION OFF DUCTILE IRON WATER MAIN PIPE WILL BE REINSTALLED IN PLACE OF THE REMOVED WATER MAIN (CITY OF PHOENIX STANDARD DETAIL NO. P1344).
10. POT HOLE AND FIELD VERIFY ELEVATION AND LOCATION PRIOR TO CONSTRUCTION. MAINTAIN A MINIMUM 12" CLEARANCE BETWEEN OUTSIDE OF NEW FIRE LINE AND OUTSIDE OF DRY UTILITIES

UNDERGROUND UTILITY TRACER WIRE NOTE:

ALL NEW UNDERGROUND FACILITIES/UTILITIES SHALL BE INSTALLED WITH A DETECTABLE UNDERGROUND LOCATION DEVICE. INSTALL A #18 INSULATED TRACER WIRE SECURELY ATTACHED TO EACH UTILITY AT 8- FEET ON CENTER. 12' OF TRACER WIRE SHALL BE ACCESSIBLE ABOVE GRADE AT THE TERMINATION AND SHALL BE SECURELY ATTACHED AT THAT POINT. THE CONTRACTOR SHALL VERIFY WHICH COLOR TO USE FOR STORM DRAIN, WATER, SEWER, ETC., WITH THE CITY OF PHOENIX AND APPROPRIATE UTILITY COMPANIES. THE CONTRACTOR SHALL INCLUDE ALL COSTS ASSOCIATED WITH THIS REQUIREMENT IN THEIR BID.

NOTE:
THRUST BLOCKS WILL NOT BE PERMITTED IN THE CITY OF PHOENIX RIGHT-OF-WAY. JOINT RESTRAINT PER M.A.G. STANDARD DETAILS 302-1, 302-2, 303-1, AND 303-2 SHALL BE USED WHEN BENDS ARE ALLOWED IN THE CITY OF PHOENIX RIGHT-OF-WAY

NOTE:
ALL BEDDING IN CITY OF PHOENIX RIGHT-OF-WAY TO BE INSTALLED PER CITY REQUIREMENTS.



BIDLERGROUP

BIDDING
FOR
CONSTRUCTION

EXPIRES 9-30-25

Bowman

1960 N. Desert Blvd, Suite 210
Tempe, Arizona 85288
Phone: (480) 838-0000

www.bowman.com

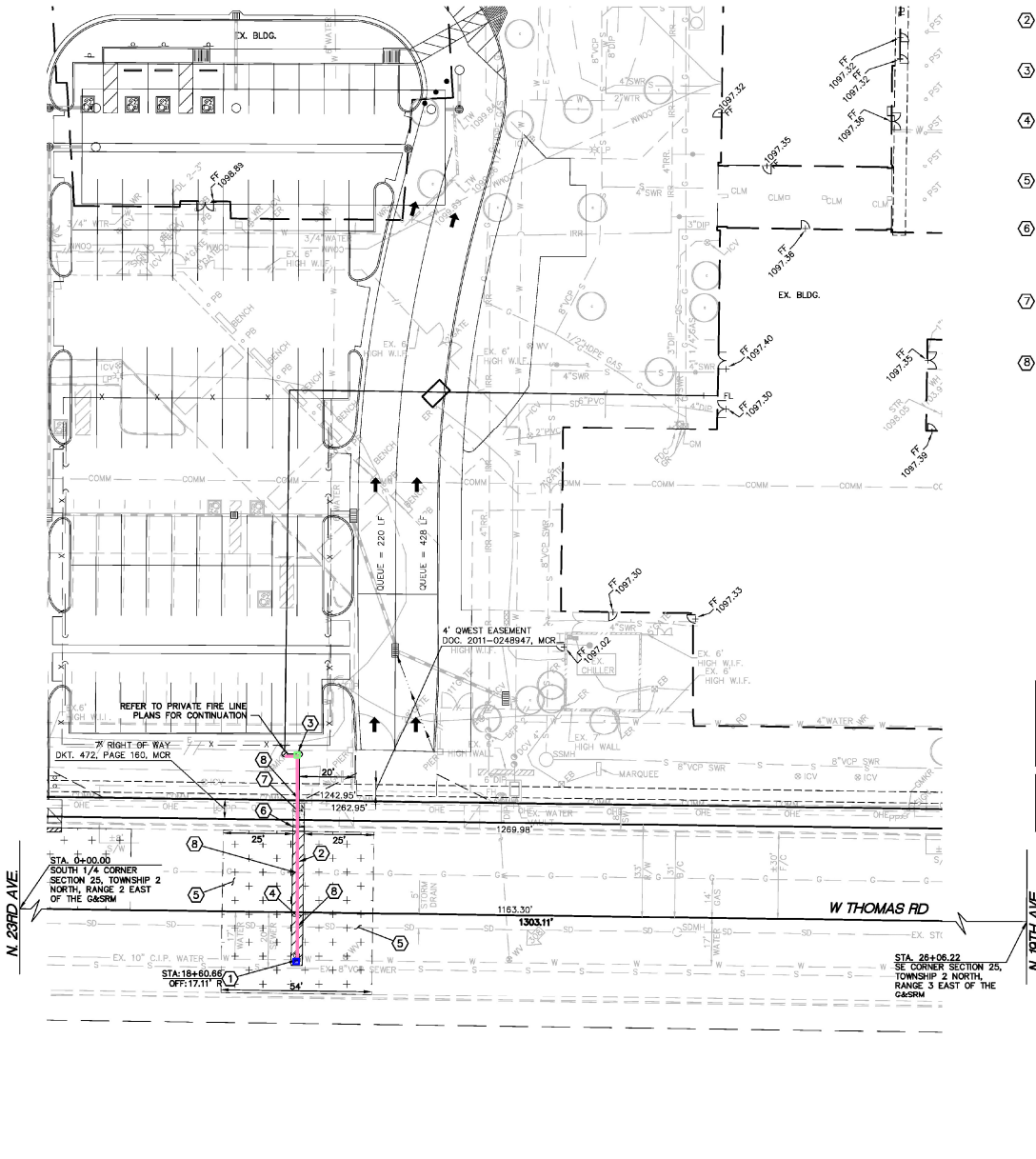
METRO TECH - PH2
PHOENIX UNION HIGH SCHOOL DISTRICT

BIDDING SET
05-20-25
Revisions
4903969

- Iron Pipe
- Backflow Prevention Assembly
- Tapping Sleeve and Gate Valve

- SD — EXISTING STORM DRAIN LINE (MAP DRAWN)
- S — EXISTING SEWER LINE (MAP DRAWN)
- PROPOSED SAWCUT
- PROPOSED CONCRETE
- PROPOSED PAVEMENT RESTORATION

Off-Site AW Scope of Work



PUBLIC FIRE LINE CONSTRUCTION NOTES:

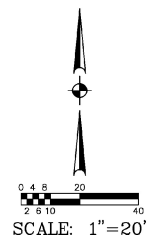
- 1 INSTALL 8" X 8" TAPPING SLEEVE AND 8" GATE VALVE WITH VALVE BOX AND COVER (MAG STANDARD DETAIL NO.'S 340 AND CITY OF PHOENIX DETAIL NO.'S, P1391-1, TYPE 'A' AND 270).
- 2 INSTALL 8" POLYWRAPPED DUCTILE IRON PIPE (PRESSURE CLASS 350, MINIMUM THICKNESS CLASS 50) WATER LINE)
- 3 INSTALL 8" DOUBLE CHECK VALVE BACKFLOW PREVENTION ASSEMBLY (CITY OF PHOENIX STANDARD DETAIL NO P1352)
- 4 SAWCUT, REMOVE AND REPLACE EXISTING A.C. PAVEMENT (MAG SPECIFICATION SECTION 336 AND CITY OF PHOENIX STANDARD DETAIL NO. P1200 OR MATCH EXISTING, WHICHEVER IS GREATER).
- 5 MILL AND OVERLAY THE EXISTING PAVEMENT WITH CRACK AND MICRO-SEAL PER CITY OF PHOENIX STREET CUT POLICY (TRT 00164 AND ORDINANCE G-6308).
- 6 SAWCUT, REMOVE AND REPLACE EXISTING CONCRETE VERTICAL CURB AND GUTTER TO NEAREST JOINT, OR AS DIRECTED BY CITY INSPECTOR (MAG STANDARD DETAIL NO. 220-1, TYPE 'A'). BACKFILL WITH HALF SACK SLURRY.
- 7 SAWCUT, REMOVE AND REPLACE EXISTING CONCRETE SIDEWALK TO NEAREST JOINT, OR AS DIRECTED BY THE CITY INSPECTOR (CITY OF PHOENIX STANDARD DETAIL P1230). BACKFILL WITH HALF SACK SLURRY.
- 8 POTHOLE AND FIELD VERIFY ELEVATION AND LOCATION PRIOR TO CONSTRUCTION. MAINTAIN A MINIMUM 12" CLEARANCE BETWEEN OUTSIDE OF NEW FIRE LINE AND OUTSIDE OF DRY UTILITIES

UNDERGROUND UTILITY TRACER WIRE NOTE:

ALL NEW UNDERGROUND FACILITIES/UTILITIES SHALL BE INSTALLED WITH A DETECTABLE UNDERGROUND LOCATION DEVICE. INSTALL A #18 INSULATED TRACER WIRE SECURELY ATTACHED TO EACH UTILITY AT 8'-FEET ON CENTER. 12" OF TRACER WIRE SHALL BE ACCESSIBLE ABOVE GRADE AT THE TERMINATION AND SHALL BE SECURELY ATTACHED AT THAT POINT. THE CONTRACTOR SHALL VERIFY WHICH COLOR TO USE FOR STORM DRAIN, WATER, SEWER, ETC., WITH THE CITY OF PHOENIX AND APPROPRIATE UTILITY COMPANIES. THE CONTRACTOR SHALL INCLUDE ALL COSTS ASSOCIATED WITH THIS REQUIREMENT IN THEIR BID.

NOTE:
THRUST BLOCKS WILL NOT BE PERMITTED IN THE CITY OF PHOENIX RIGHT-OF-WAY. JOINT RESTRAINT PER M.A.G. STANDARD DETAILS 302-1, 302-2, 303-1, AND 303-2 SHALL BE USED WHEN BENDS ARE ALLOWED IN THE CITY OF PHOENIX RIGHT-OF-WAY.

NOTE:
ALL BEDDING IN CITY OF PHOENIX RIGHT-OF-WAY TO BE INSTALLED PER CITY REQUIREMENTS.



EDLGROUP

BIDDING FOR CONSTRUCTION

EXPIRES 9-30-25

Bowman

1900 N. Desert Blvd, Suite 217
Tempe, Arizona 85288
Phone: (480) 838-0000

METRO TECH - PH2
PHOENIX UNION HIGH SCHOOL DISTRICT

BIDDING SET

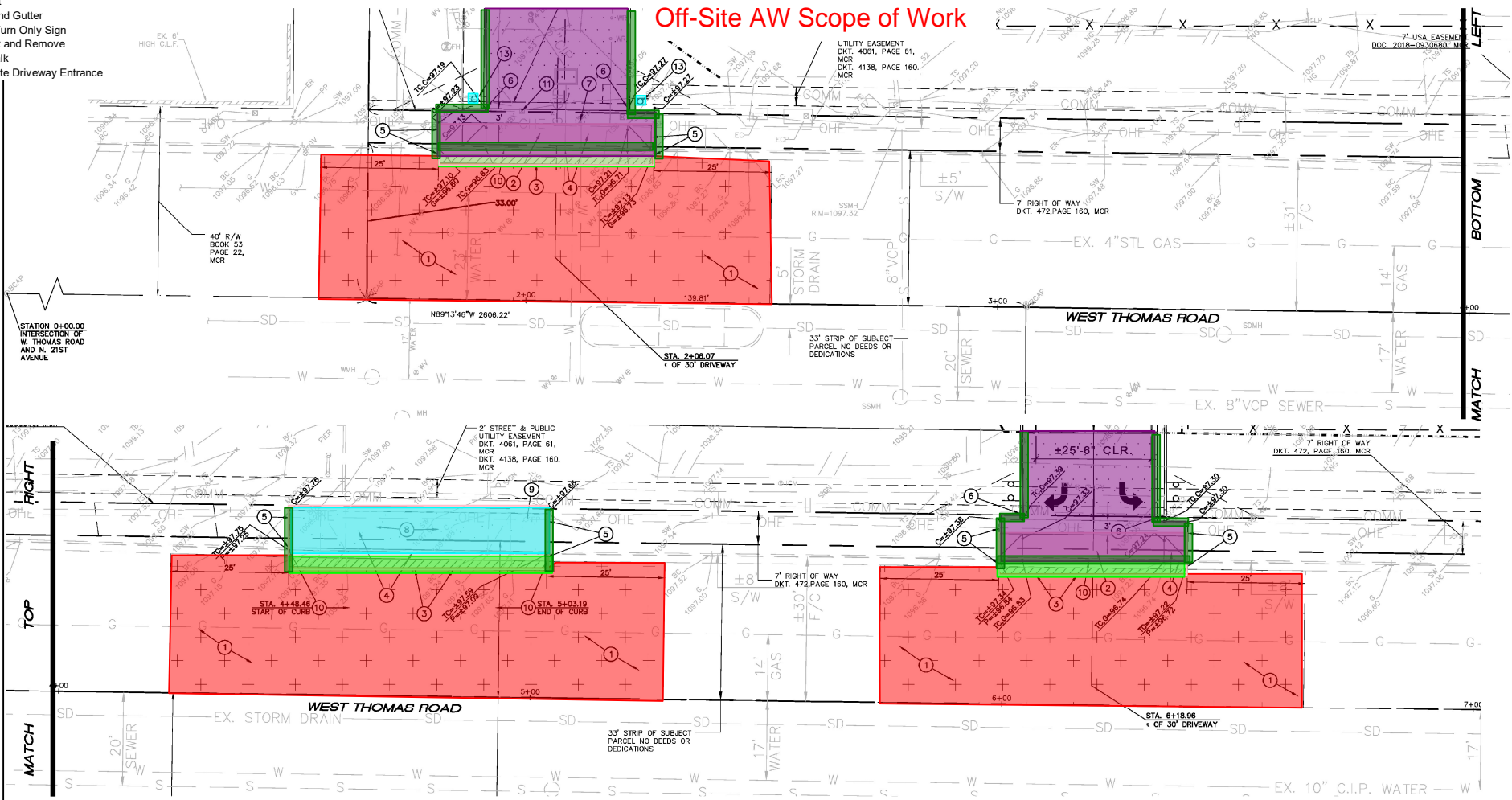
05-20-25
Revisions

4503969

2 OF 2
OFL-2

- █ Crack Fill and Slurry Seal
- █ Asphalt
- █ Curb and Gutter
- █ Right Turn Only Sign
- █ Sawcut and Remove
- █ Sidewalk
- █ Concrete Driveway Entrance

Off-Site AW Scope of Work

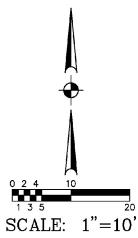


OFFSITE PAVING CONSTRUCTION NOTES:

- 1 CRACK FILL AND SLURRY SEAL ROADWAY PER THE CITY OF PHOENIX PAVEMENT CUT POLICY. APPLY TYPE IV SLURRY SEAL PER THE CITY OF PHOENIX REQUIREMENTS TO HALF WIDTH OF W. THOMAS ROAD OR N. 19TH AVENUE IMPACTED BY PAVEMENT REMOVAL OR REPLACEMENT. THE TREATMENT AREA SHALL EXTEND 25' IN BOTH DIRECTIONS FROM THE PAVEMENT CUTS. CRACK FILL AND SLURRY SEAL BETWEEN EXISTING AND NEW PAVEMENT AREAS PRIOR TO ANY PAVEMENT TREATMENT.
- 2 CONSTRUCT CONCRETE DRIVEWAY ENTRANCE (CITY OF PHOENIX STANDARD DETAIL NO. P1255-1).
- 3 SAWCUT REMOVE AND REPLACE A MINIMUM 2 FEET (2') OR EXISTING A.C. PAVEMENT (MAG SECTION 336 AND CITY OF PHOENIX STANDARD DETAIL NO. P1200, TYPE B, OR MATCH EXISTING, WHICHEVER IS GREATER).
- 4 SAWCUT AND REMOVE EXISTING CONCRETE VERTICAL CURB, GUTTER AND SIDEWALK.
- 5 MATCH EXISTING ELEVATION AND LOCATION.
- 6 INSTALL CURB TERMINATION (MAG STANDARD DETAIL NO. 222).

- 7 EXISTING FIRE HYDRANT TO BE RELOCATED (SEE PUBLIC FIRE HYDRANT PLANS FOR DETAILS).
- 8 INSTALL CONCRETE SIDEWALK (CITY OF PHOENIX STANDARD DETAIL NO. P1230).
- 9 EXISTING LIGHT POLE TO REMAIN. PROTECT FROM DAMAGE.
- 10 INSTALL CONCRETE VERTICAL CURB AND GUTTER (MAG STANDARD DETAIL NO. 220-1, TYPE A).
- 11 CONTRACTOR SHALL COORDINATE WITH QWEST TO RELOCATE EXISTING COMMUNICATION BOX OUT OF NEW DRIVEWAY ENTRANCE LOCATION.
- 12 CONSTRUCT DRIVEWAY ENTRANCE (CITY OF PHOENIX STANDARD DETAIL NO. P1255-2).
- 13 INSTALL "RIGHT TURN ONLY" SIGN (M.U.T.C.D. R3-5R, WITH POST AND BASE PER MAG STANDARD DETAIL NO. 131, TYPE 'B' (TOP OF SIGN SHALL BE 6' ABOVE GRADE)).

RJ - Is it possible to have demo pick up all of the saw cut? Or do we need to coordinate with other trades?



BIDLERGROUP

PRELIMINARY CONSTRUCTION PLAN
EXPIRES 9-30-25

Bowman
James R. Bowman
19019 N. Desert Drive, Suite 10
Tempe, Arizona 85288
Phone: (480) 838-0000
www.bowman.com

METRO TECH - PH2
PHOENIX UNION HIGH SCHOOL DISTRICT

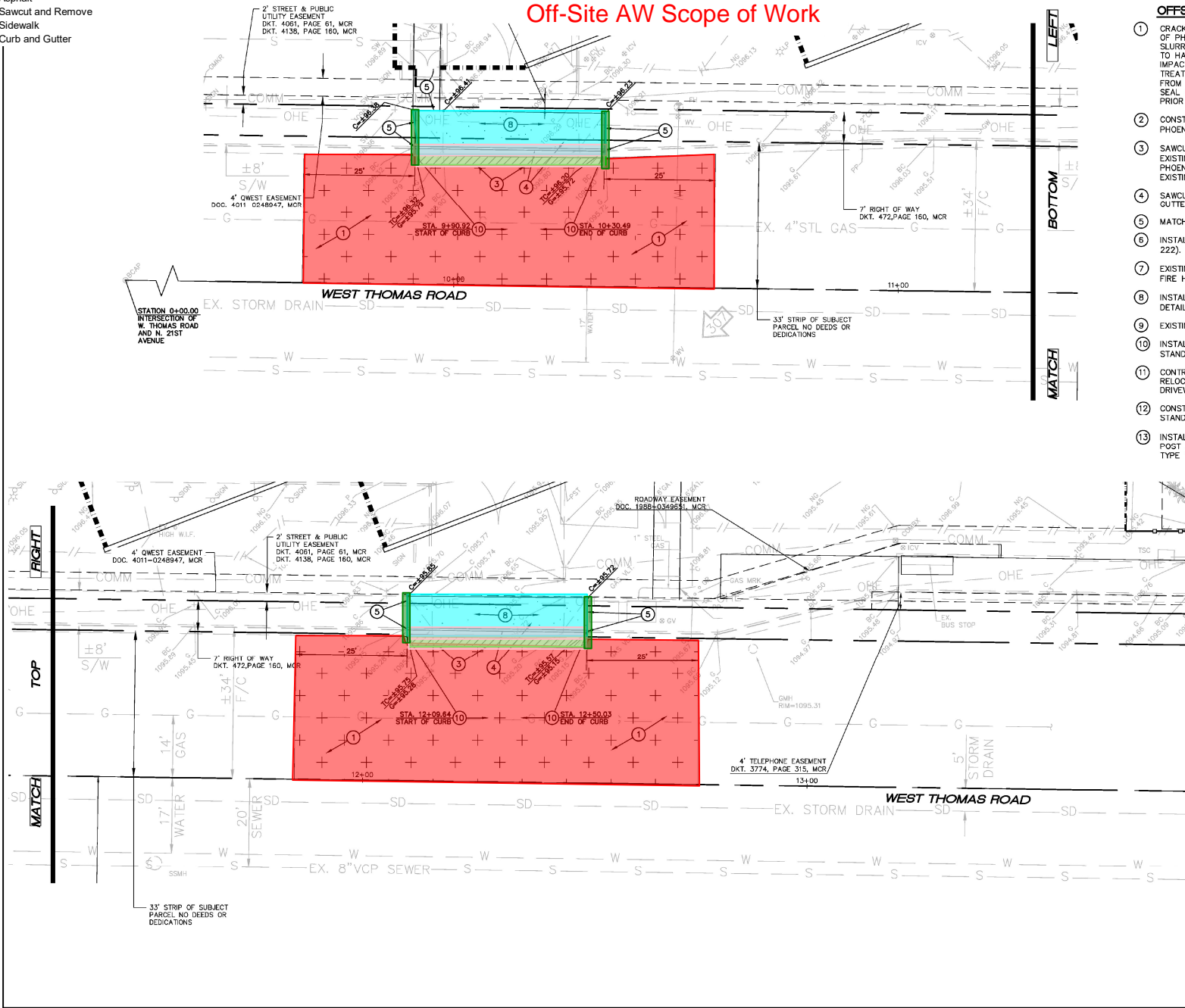
BIDDING SET
05-20-25
Revisions

4303369

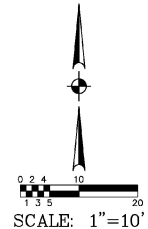
2 OF 4
OP-2

- Crack Fill and Slurry Seal
- Asphalt
- Sawcut and Remove
- Sidewalk
- Curb and Gutter

Off-Site AW Scope of Work



- OFFSITE PAVING CONSTRUCTION NOTES:**
- ① CRACK FILL AND SLURRY SEAL ROADWAY PER THE CITY OF PHOENIX PAVEMENT CUT POLICY. APPLY TYPE IV SLURRY SEAL PER THE CITY OF PHOENIX REQUIREMENTS TO HALF WIDTH OF W. THOMAS ROAD OR N. 19TH AVENUE IMPACTED BY PAVEMENT REMOVAL OR REPLACEMENT. THE TREATMENT AREA SHALL EXTEND 25' IN BOTH DIRECTIONS FROM THE PAVEMENT CUTS. CRACK FILL AND SLURRY SEAL BETWEEN EXISTING AND NEW PAVEMENT AREAS PRIOR TO ANY PAVEMENT TREATMENT.
 - ② CONSTRUCT CONCRETE DRIVEWAY ENTRANCE (CITY OF PHOENIX STANDARD DETAIL NO. P1255-1).
 - ③ SAWCUT REMOVE AND REPLACE A MINIMUM 2 FEET (2') OR EXISTING A.C. PAVEMENT (MAG SECTION 336 AND CITY OF PHOENIX STANDARD DETAIL NO. P1200, TYPE B, OR MATCH EXISTING, WHICHEVER IS GREATER).
 - ④ SAWCUT AND REMOVE EXISTING CONCRETE VERTICAL CURB, GUTTER AND SIDEWALK.
 - ⑤ MATCH EXISTING ELEVATION AND LOCATION.
 - ⑥ INSTALL CURB TERMINATION (MAG STANDARD DETAIL NO. 222).
 - ⑦ EXISTING FIRE HYDRANT TO BE RELOCATED (SEE PUBLIC FIRE HYDRANT PLANS FOR DETAILS).
 - ⑧ INSTALL CONCRETE SIDEWALK (CITY OF PHOENIX STANDARD DETAIL NO. P1230).
 - ⑨ EXISTING LIGHT POLE TO REMAIN. PROTECT FROM DAMAGE.
 - ⑩ INSTALL CONCRETE VERTICAL CURB AND GUTTER (MAG STANDARD DETAIL NO. 220-1, TYPE A).
 - ⑪ CONTRACTOR SHALL COORDINATE WITH QWEST TO RELOCATE EXISTING COMMUNICATION BOX OUT OF NEW DRIVEWAY ENTRANCE LOCATION.
 - ⑫ CONSTRUCT DRIVEWAY ENTRANCE (CITY OF PHOENIX STANDARD DETAIL NO. P1255-2).
 - ⑬ INSTALL "RIGHT TURN ONLY" SIGN (M.U.T.C.D. R3-5R, WITH POST AND BASE PER MAG STANDARD DETAIL NO. 131, TYPE 'B' (TOP OF SIGN SHALL BE 6' ABOVE GRADE)).



BIDLRGROUP

PRELIMINARY FOR CONSTRUCTION

EXPIRES 9-30-25

Bowman

1800 N. Desert Blvd, Suite 210
Tempe, Arizona 85288
Phone: (480) 968-0000
www.bowman.com

METRO TECH - PH2
PHOENIX UNION HIGH SCHOOL DISTRICT

BIDDING SET

05-20-25
Revisions

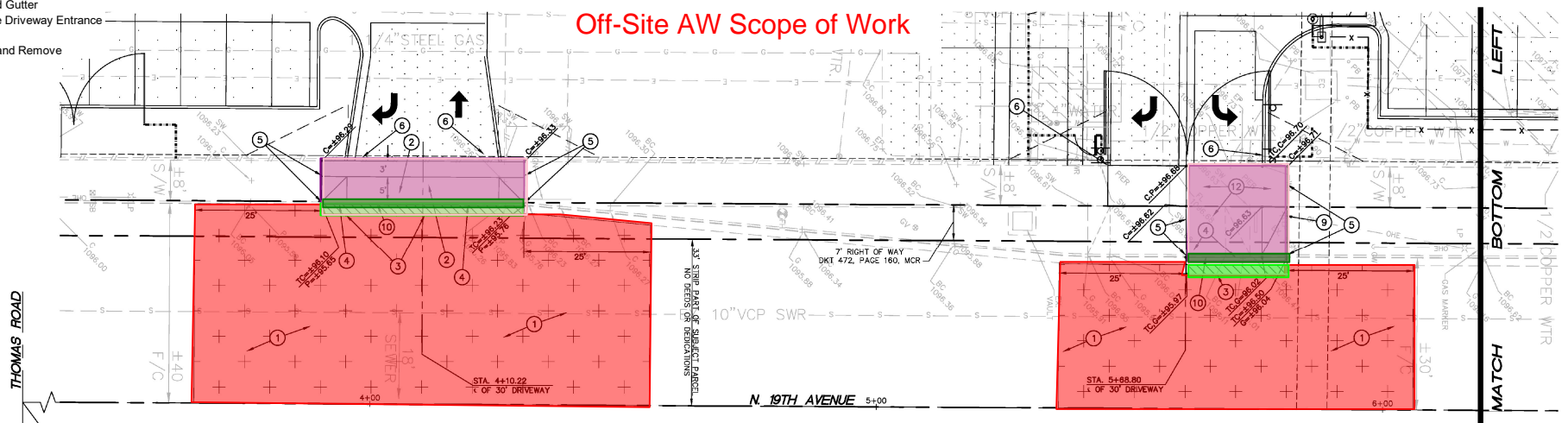
4503969

3 OF 4
OP-3

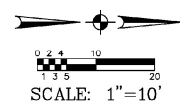


- Crack Fill and Slurry Seal
- Curb and Gutter
- Concrete Driveway Entrance
- Asphalt
- Sawcut and Remove

Off-Site AW Scope of Work



STA. 0+00.00
INTERSECTION OF THOMAS
ROAD AND N. 19TH AVENUE

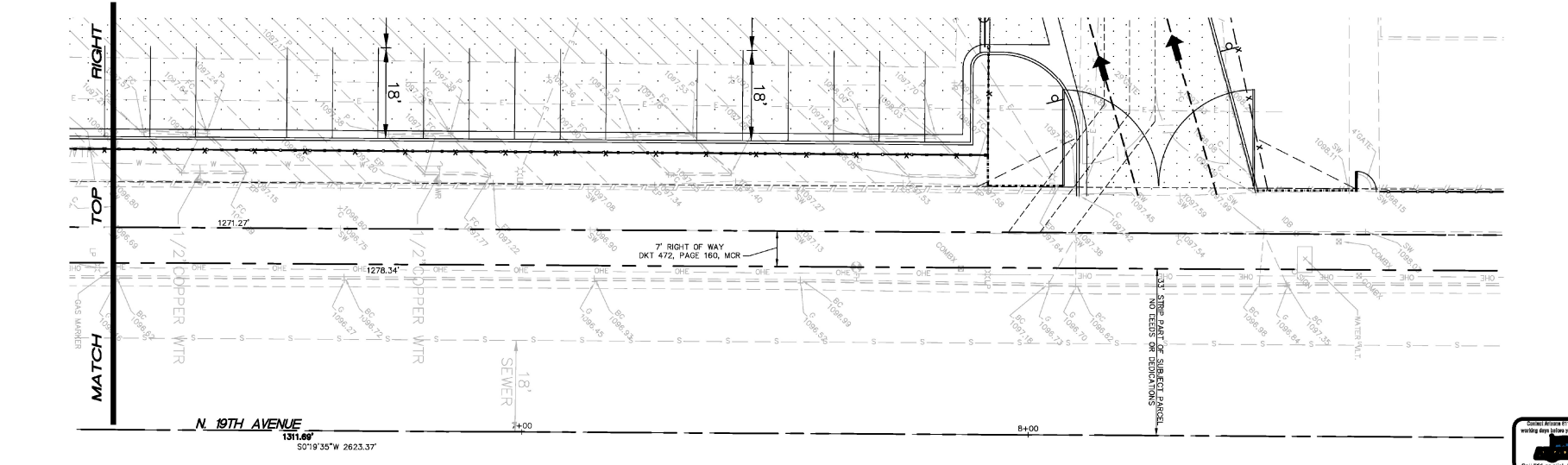


OFFSITE PAVING CONSTRUCTION NOTES:

- ① CRACK FILL AND SLURRY SEAL ROADWAY PER THE CITY OF PHOENIX PAVEMENT CUT POLICY. APPLY TYPE IV SLURRY SEAL PER THE CITY OF PHOENIX REQUIREMENTS TO HALF WIDTH OF W. THOMAS ROAD OR N. 19TH AVENUE IMPACTED BY PAVEMENT REMOVAL OR REPLACEMENT. THE TREATMENT AREA SHALL EXTEND 25' IN BOTH DIRECTIONS FROM THE PAVEMENT CUTS. CRACK FILL AND SLURRY SEAL BETWEEN EXISTING AND NEW PAVEMENT AREAS PRIOR TO ANY PAVEMENT TREATMENT.
- ② CONSTRUCT CONCRETE DRIVEWAY ENTRANCE (CITY OF PHOENIX STANDARD DETAIL NO. P1255-1).
- ③ SAWCUT REMOVE AND REPLACE A MINIMUM 2 FEET (2') OR EXISTING A.C. PAVEMENT (MAG SECTION 336 AND CITY OF PHOENIX STANDARD DETAIL NO. P1200, TYPE B, OR MATCH EXISTING, WHICHEVER IS GREATER).

- ④ SAWCUT AND REMOVE EXISTING CONCRETE VERTICAL CURB, GUTTER AND SIDEWALK.
- ⑤ MATCH EXISTING ELEVATION AND LOCATION.
- ⑥ INSTALL CURB TERMINATION (MAG STANDARD DETAIL NO. 222).
- ⑦ EXISTING FIRE HYDRANT TO BE RELOCATED (SEE PUBLIC FIRE HYDRANT PLANS FOR DETAILS).
- ⑧ INSTALL CONCRETE SIDEWALK (CITY OF PHOENIX STANDARD DETAIL NO. P1230).
- ⑨ EXISTING LIGHT POLE TO REMAIN. PROTECT FROM DAMAGE.
- ⑩ INSTALL CONCRETE VERTICAL CURB AND GUTTER (MAG STANDARD DETAIL NO. 220-1, TYPE A).

- ⑪ CONTRACTOR SHALL COORDINATE WITH QWEST TO RELOCATE EXISTING COMMUNICATION BOX OUT OF NEW DRIVEWAY ENTRANCE LOCATION.
- ⑫ CONSTRUCT DRIVEWAY ENTRANCE (CITY OF PHOENIX STANDARD DETAIL NO. P1255-2).
- ⑬ INSTALL "RIGHT TURN ONLY" SIGN (M.U.T.C.D. R3-5R, WITH POST AND BASE PER MAG STANDARD DETAIL NO. 131, TYPE 'B' (TOP OF SIGN SHALL BE 6' ABOVE GRADE)).



N. 19TH AVENUE
1311.69
50°19'35"W 2623.37'

